

SMART STATIONS IN SMART CITIES

6th International Conference on Railway Stations

Madrid, 19-21 OCTOBER 2017

CIUDAD COBO CALLEJA

(Final Thesis Project)

Roberto de Vicente Pina
San Pablo CEU University
Madrid, Spain

Session 1a - Solutions for Integrated Mobility

Tutors:

Izaskun Chinchilla Moreno

- Building construction: Cristina Villamil Cajoto
- Structures: Mariano Molina Iniesta
- Facilities: Rodrigo Núñez Carrasco

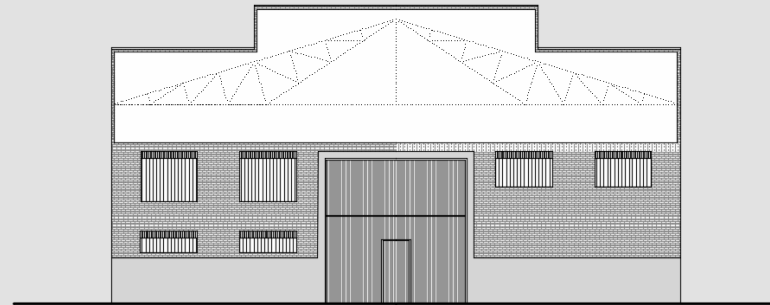
UNDER THE HIGH PATRONAGE OF



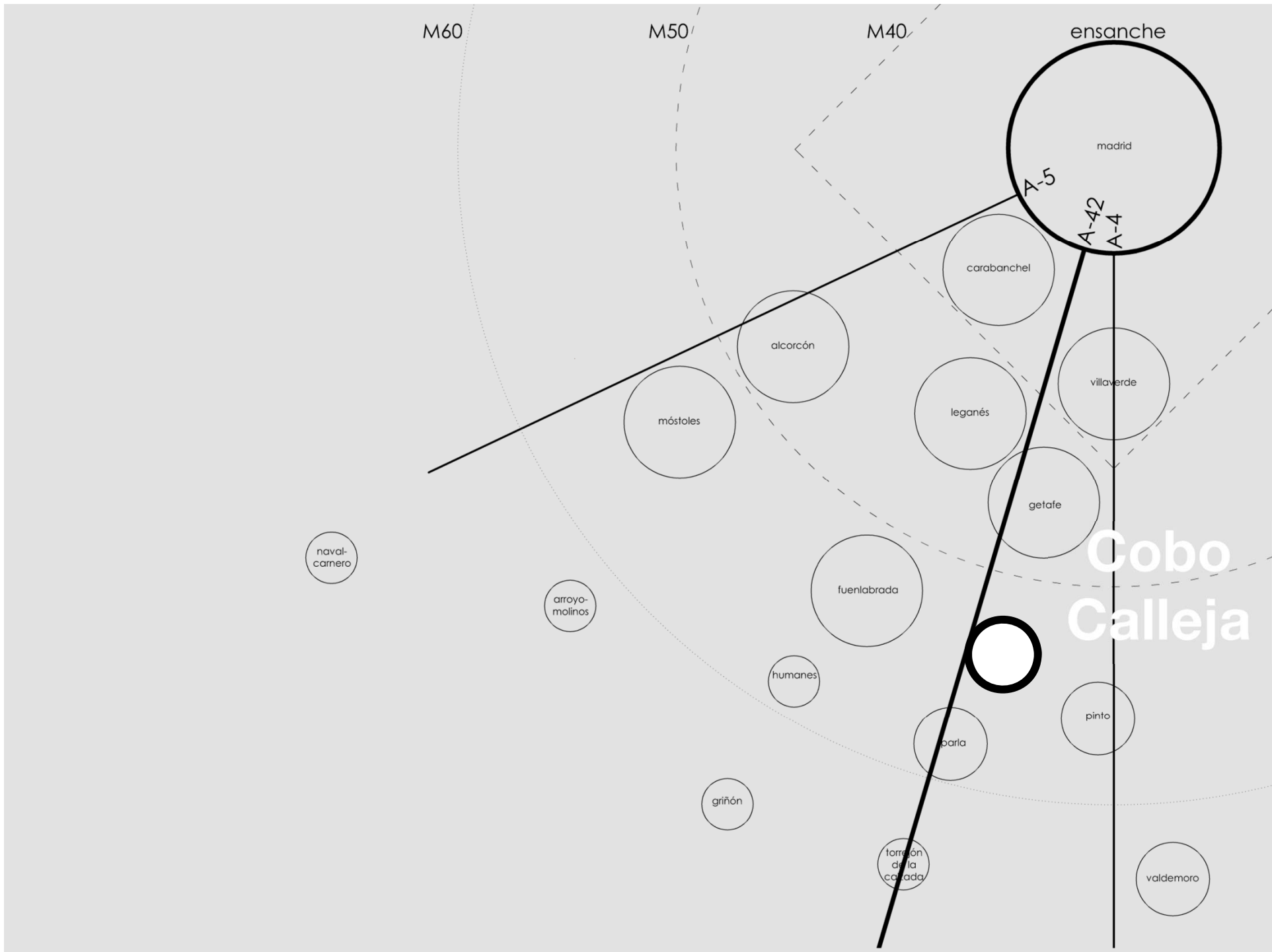
Suburban Rail System in Sprawl Cities?

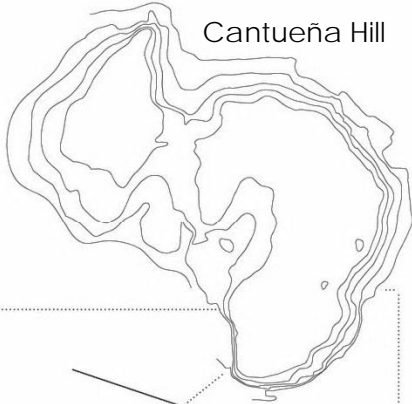


Roberto de Vicente Pina
Universidad San Pablo **CEU**
PFC Mayo 2017

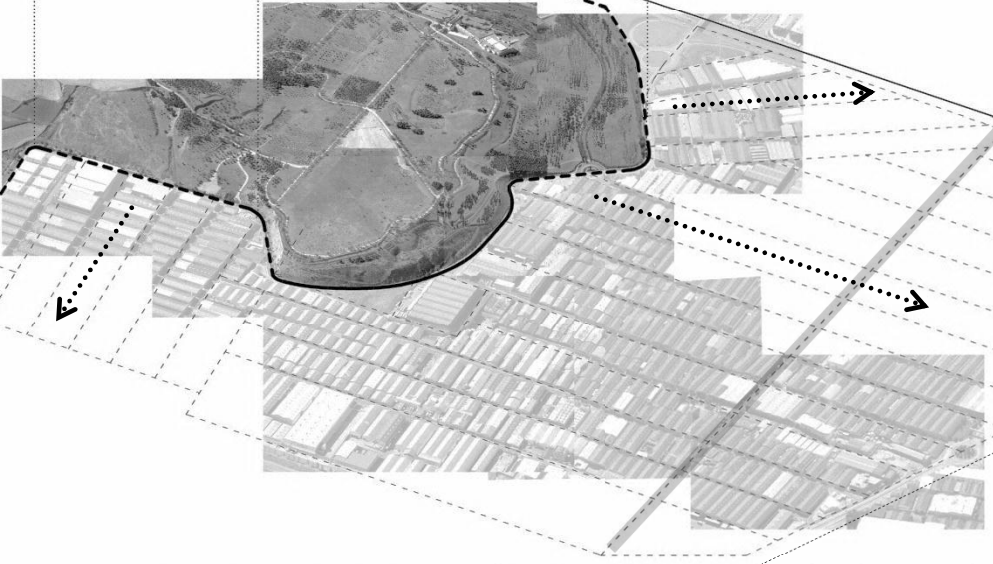


Public Transport in Compact Cities





Cantueña Hill



A-42

C-4 railway



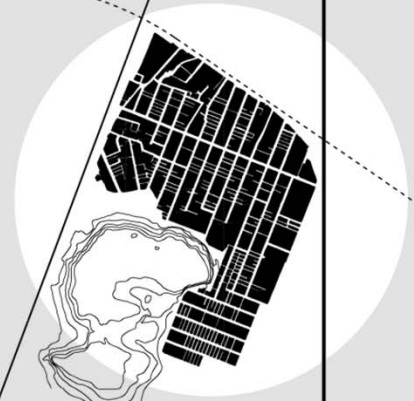


实达贸易

VENTA AL POR MAYOR MULTIPRECIO



M-506



parla

A-42

C-4

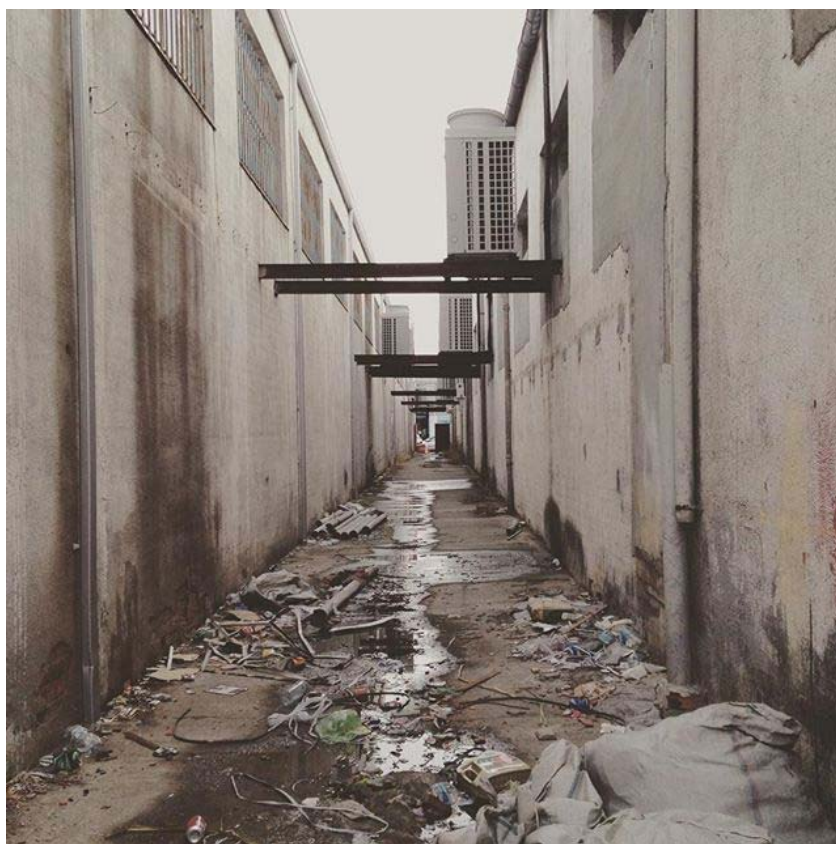
getafe



Stations as Meeting Spaces



The Sheltered Square







**CIUDAD
COBO
CALLEJA**



○ **Madrid**
(El Abroñigal)

● Villaverde bajo

● Villaverde alto

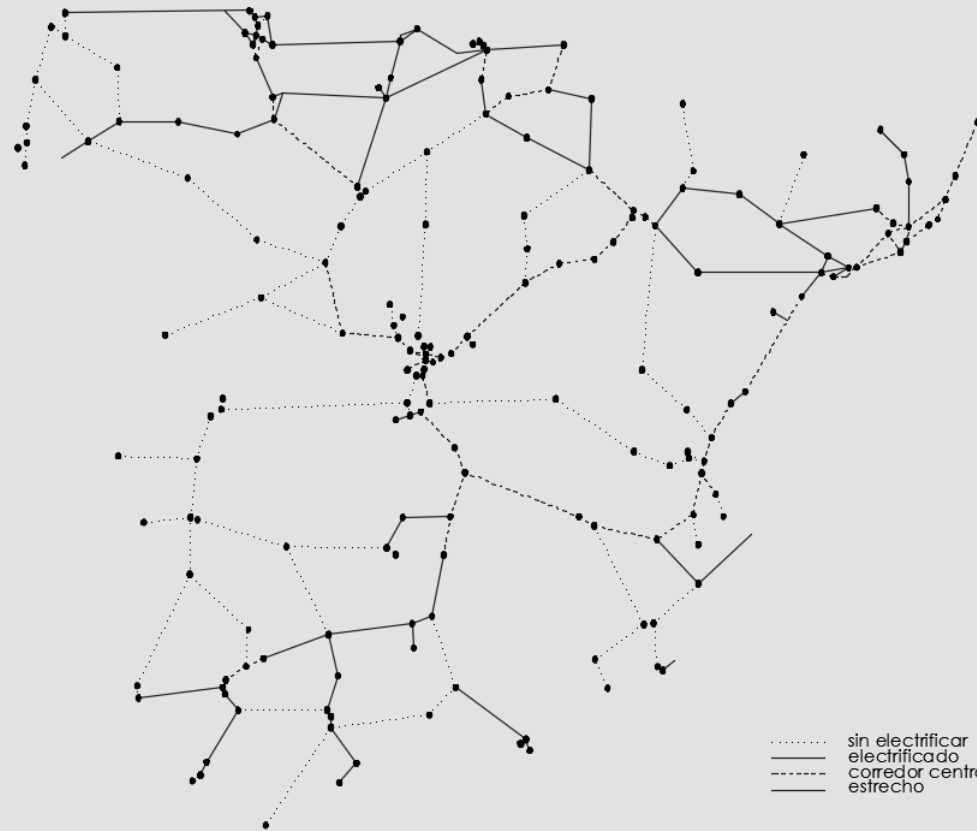
● Las Margaritas

● Getafe centro

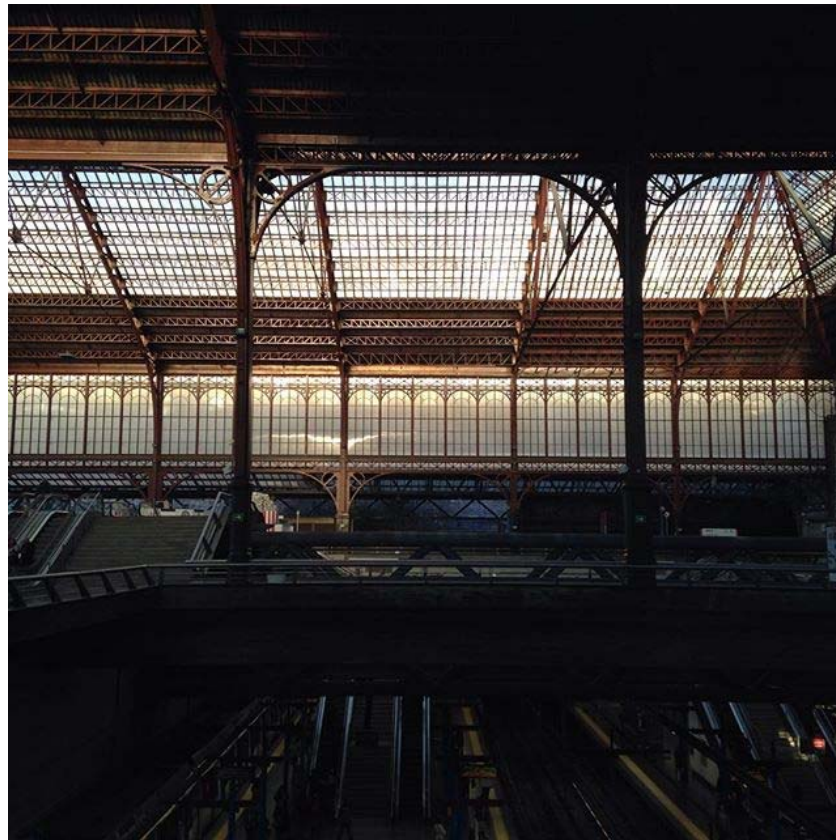
● Getafe sector 3

○ **Cobo
Calleja**

○ **Parla**





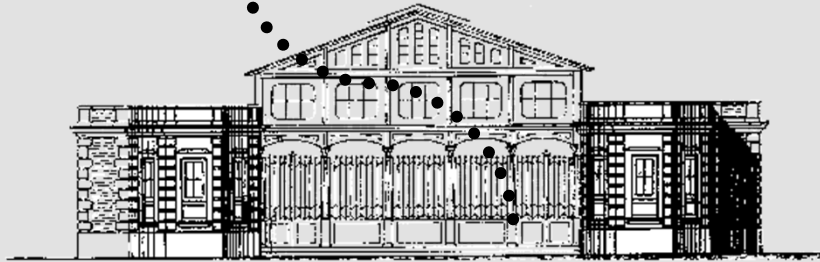


Príncipe Pío Railway Station



Atocha Railway Station

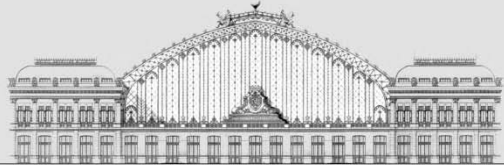
open
space



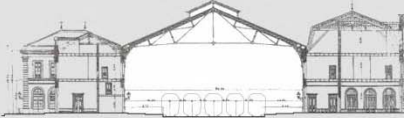
leisure
areas

leisure
areas

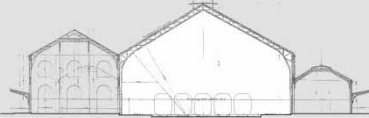
Mediodía / Atocha
○
Estación Central



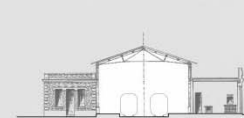
Norte / Príncipe Pío
○
Centro Comercial



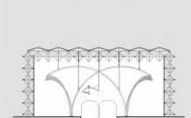
Delicias
○
Museo del Ferrocarril



Goya
○
Reconversión de Suelo

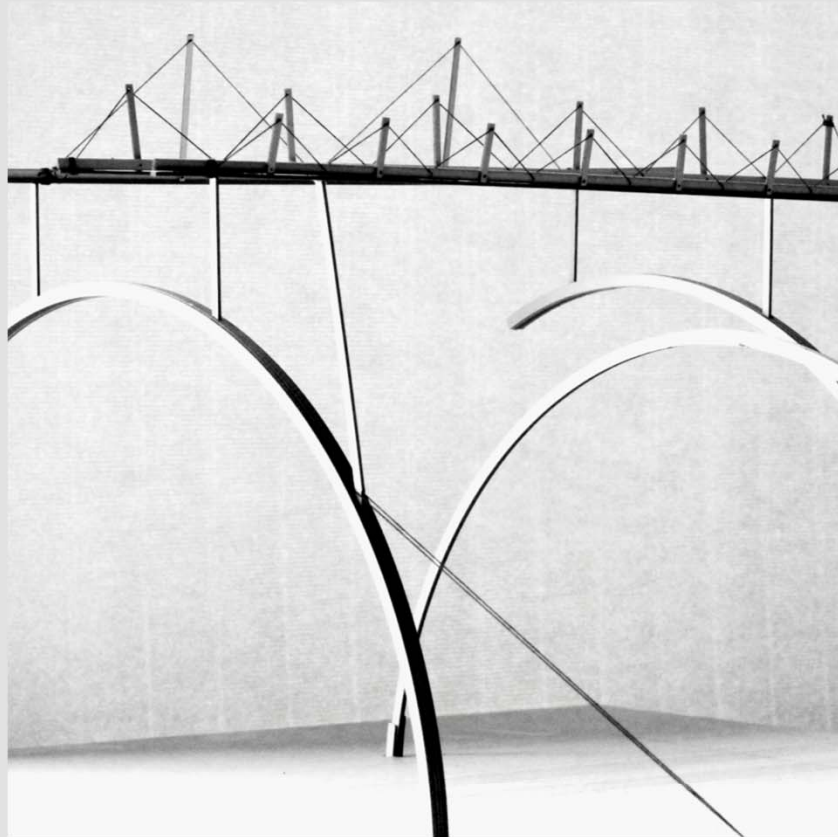


Cobo Calleja
○
Oportunidad

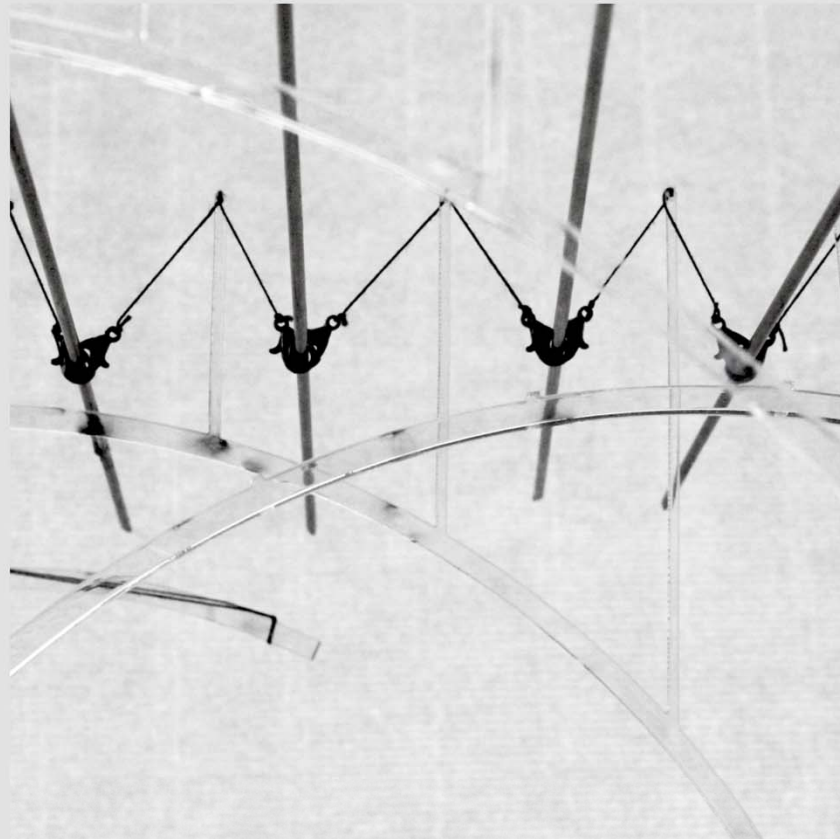




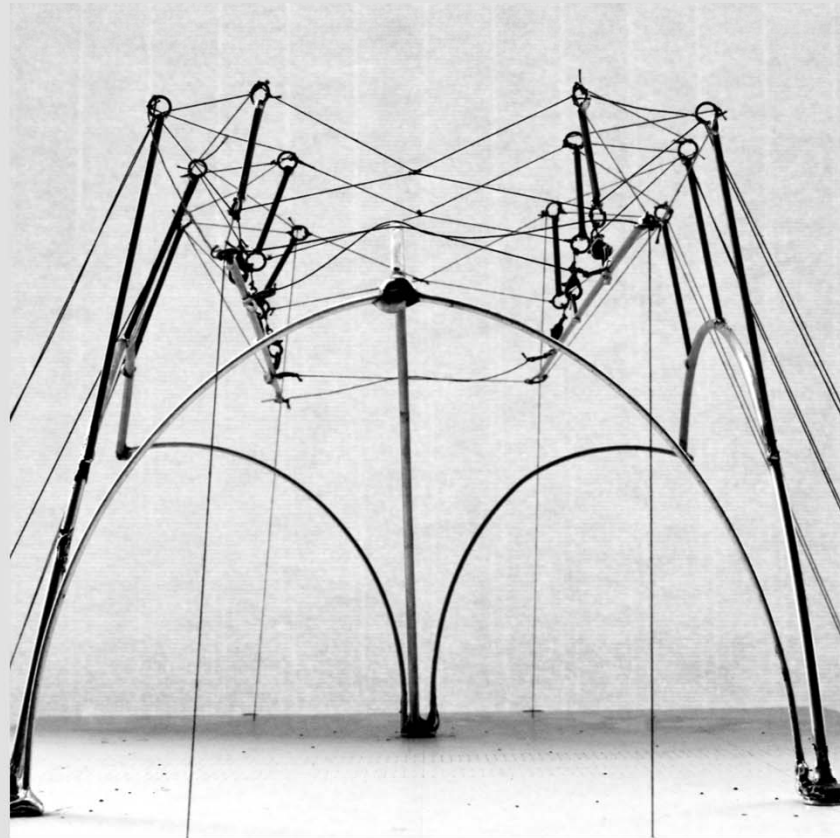
The Structure



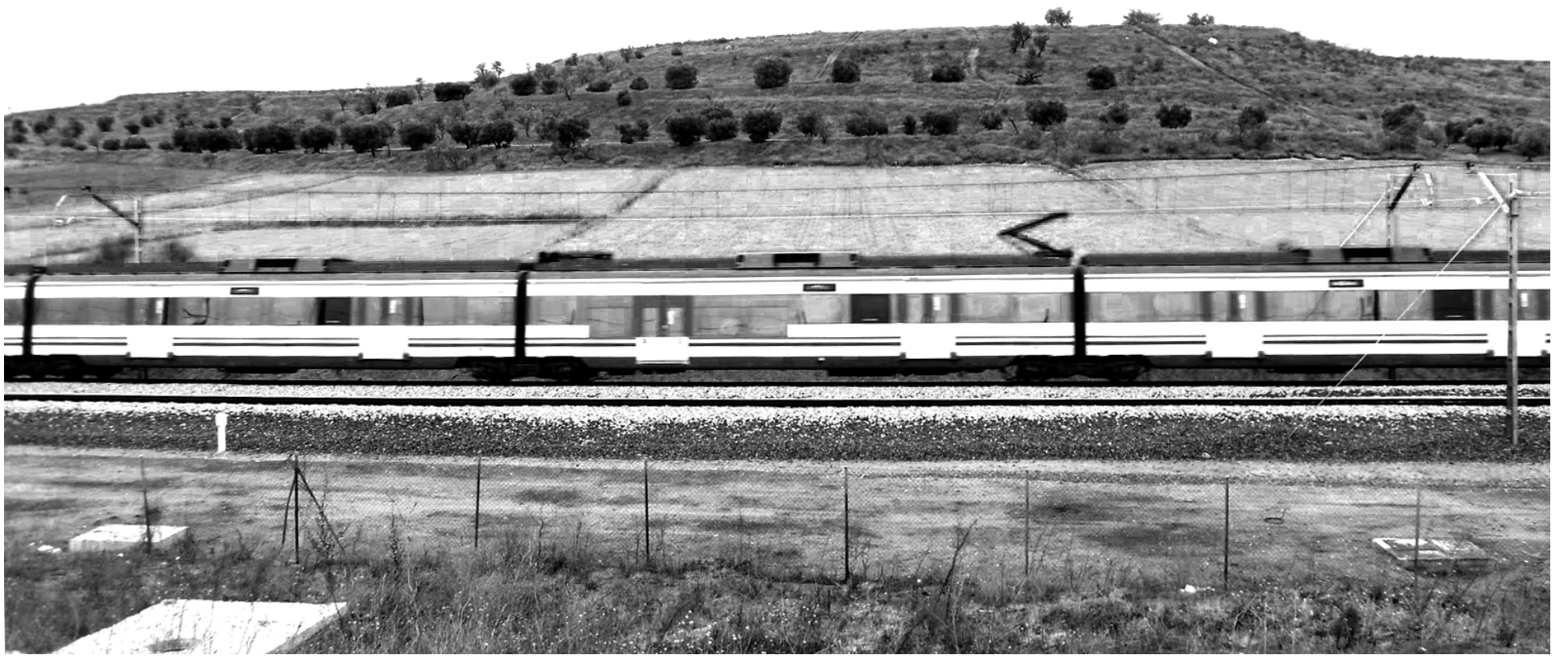
Structure Model 1

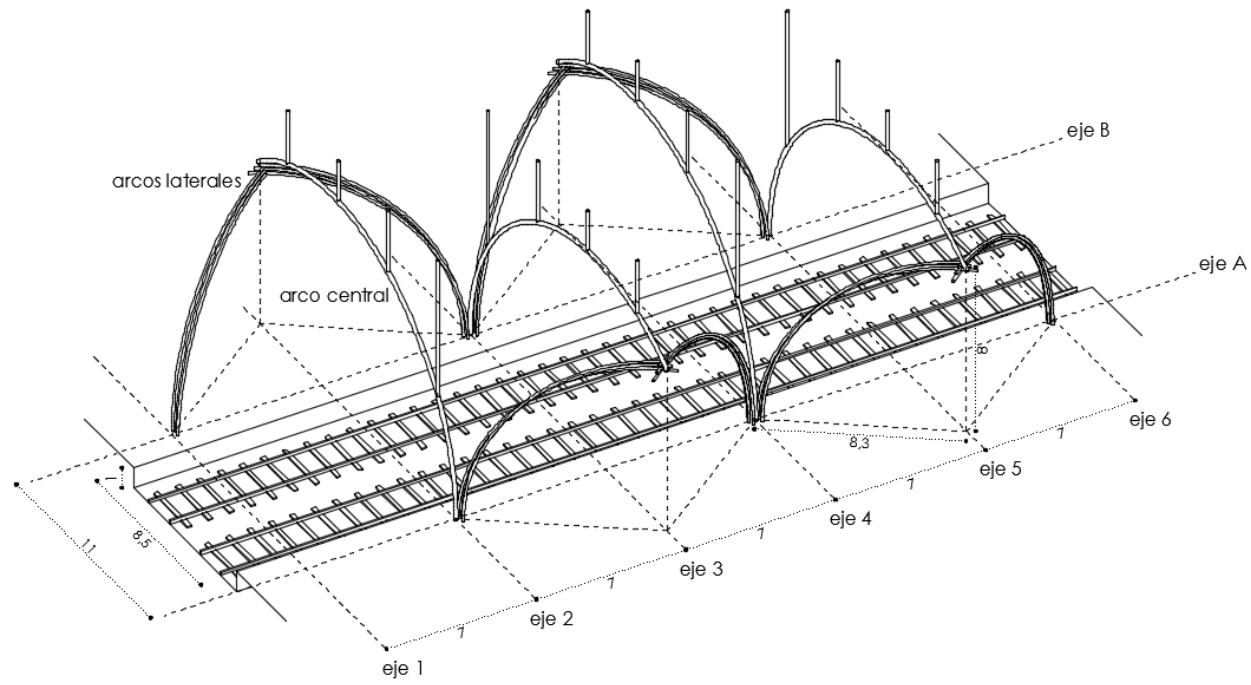


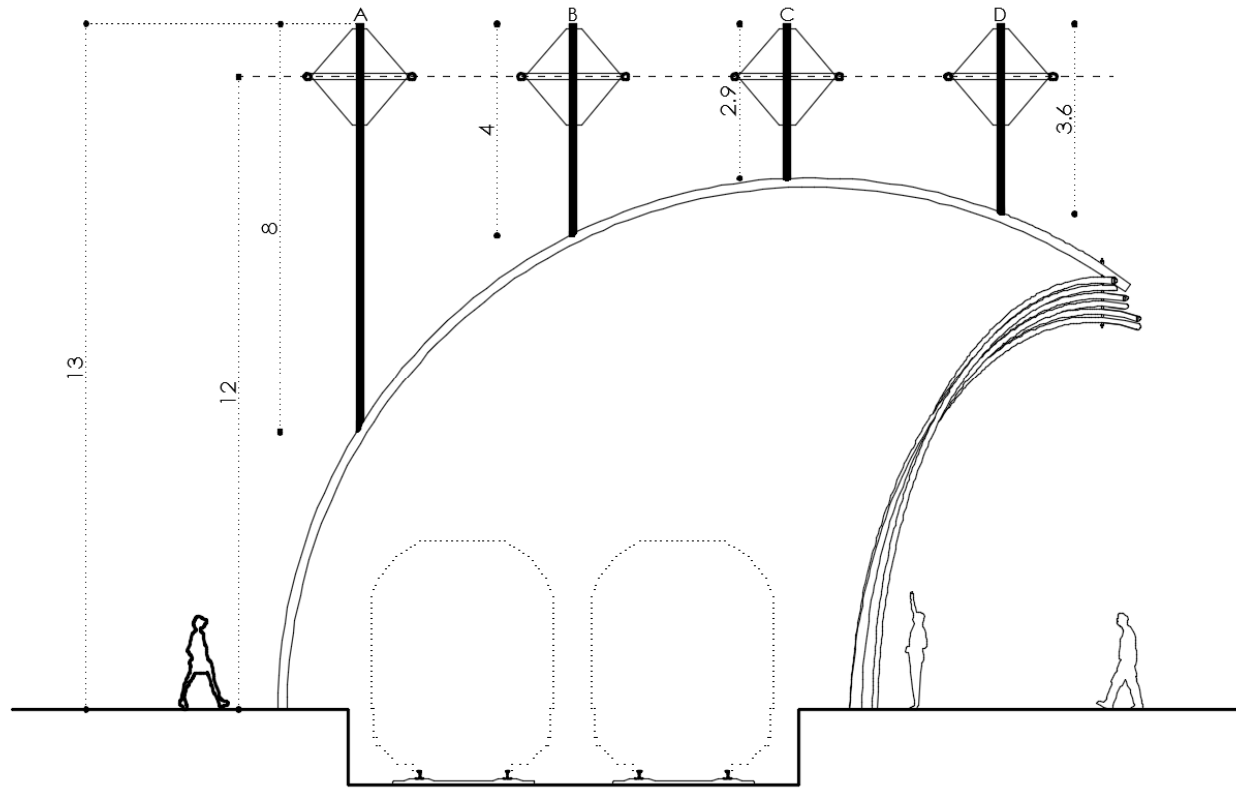
Structure Model 2

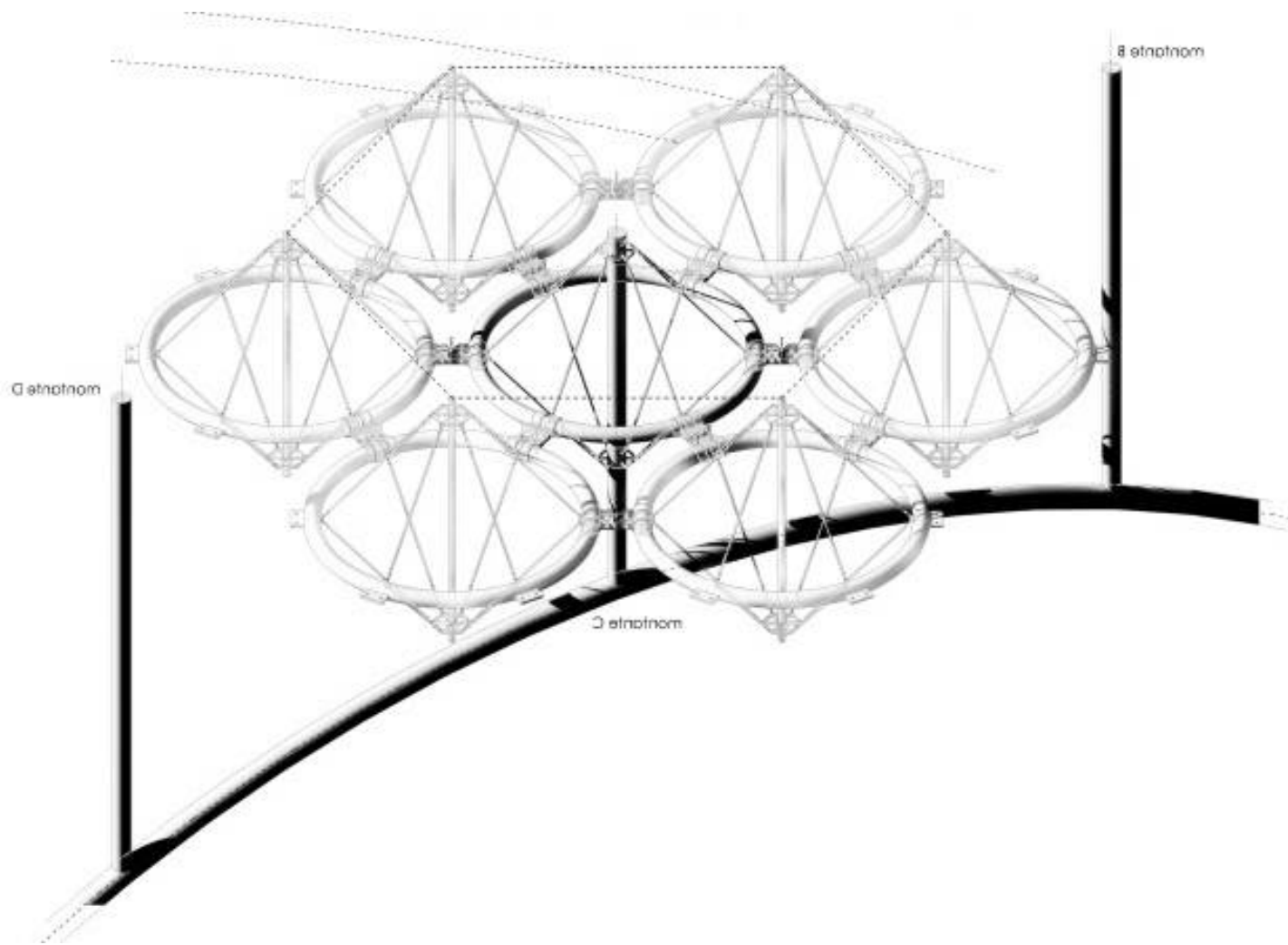


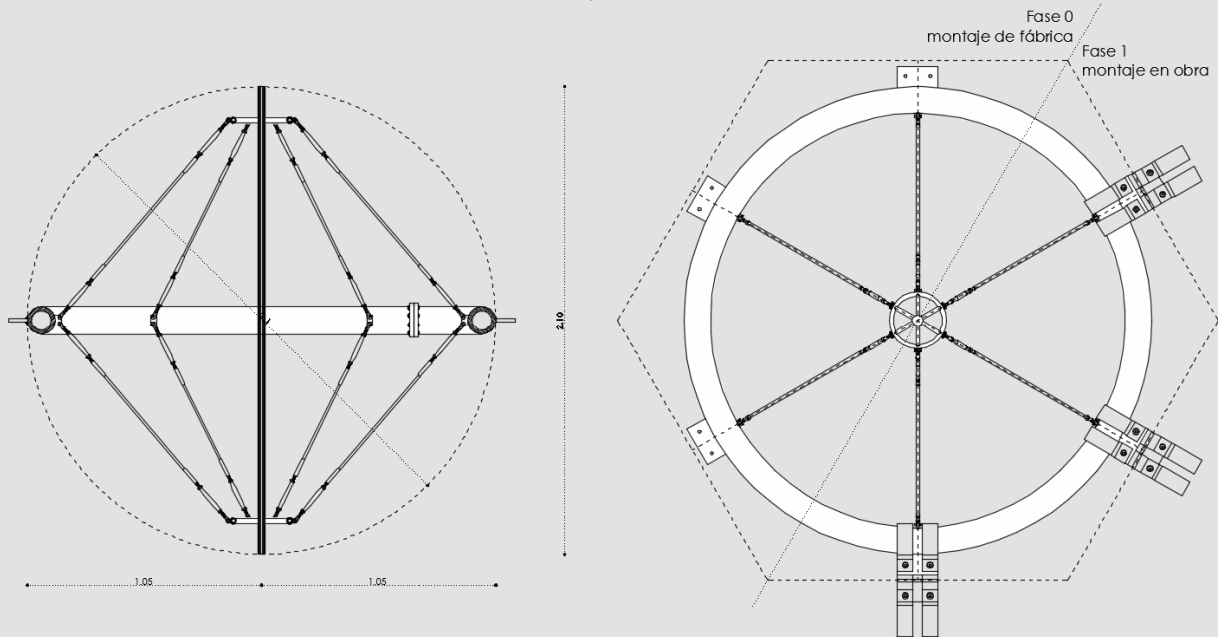
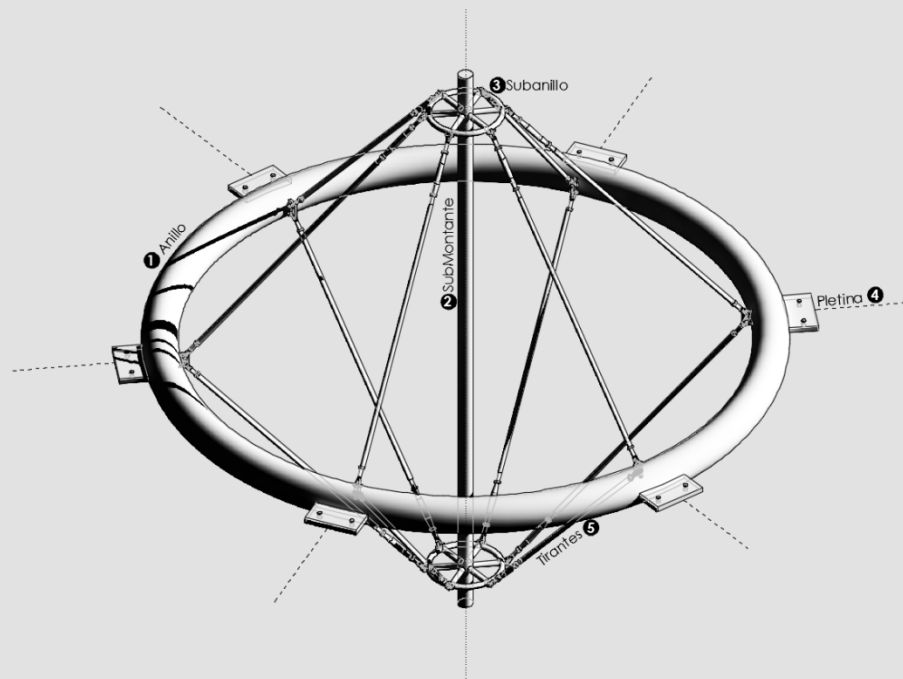
Structure Model 3

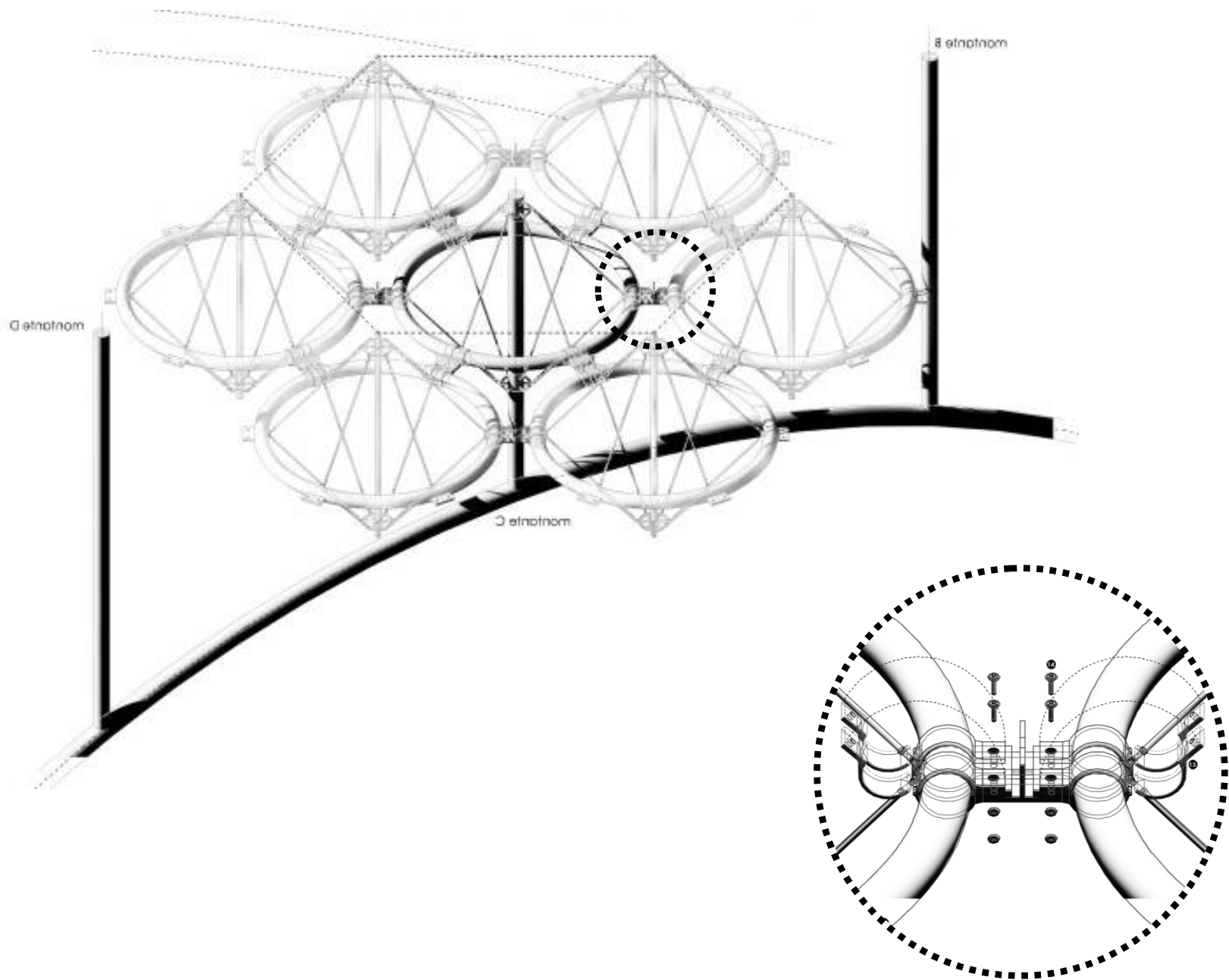


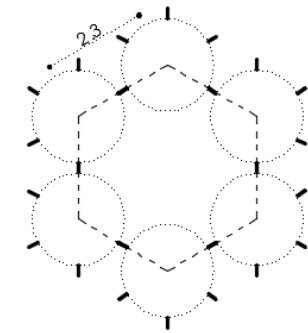
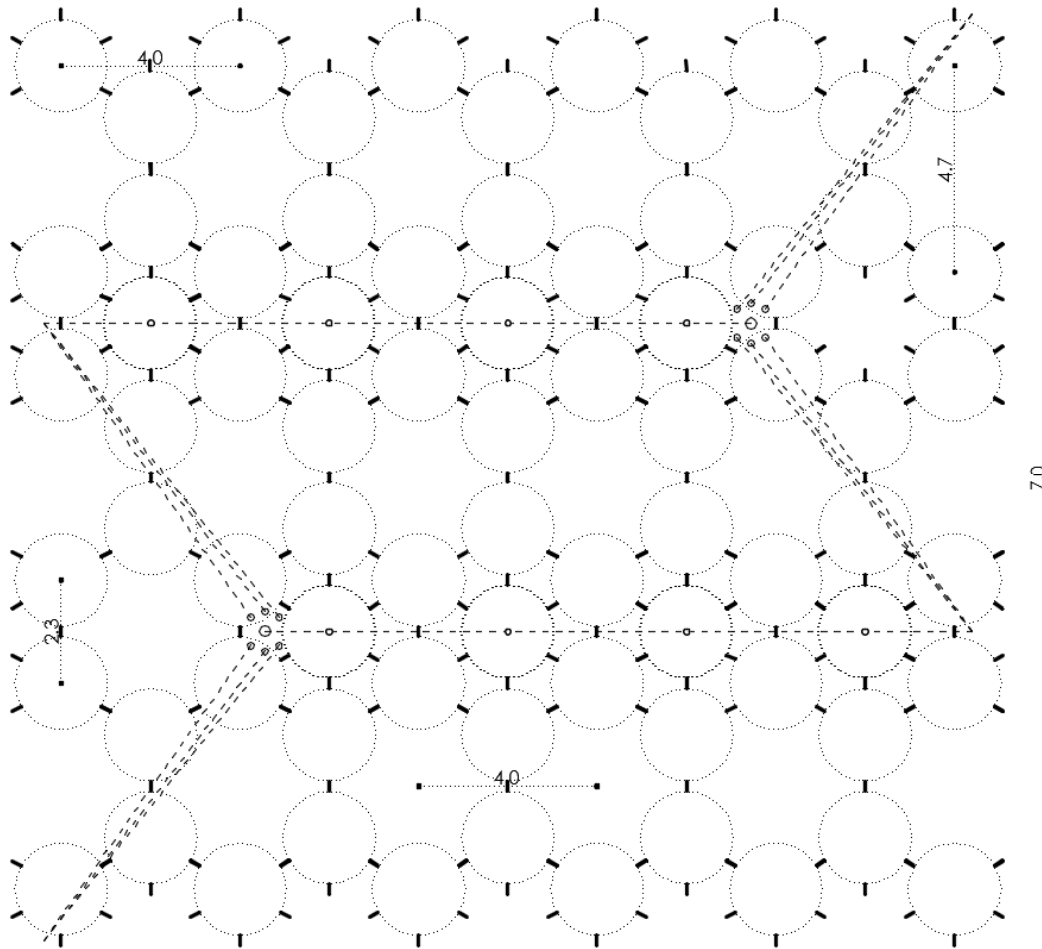




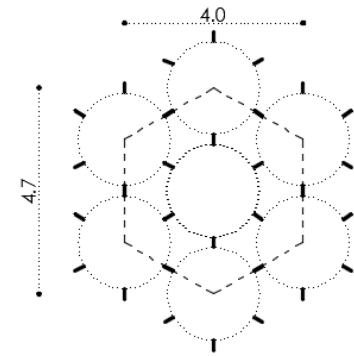






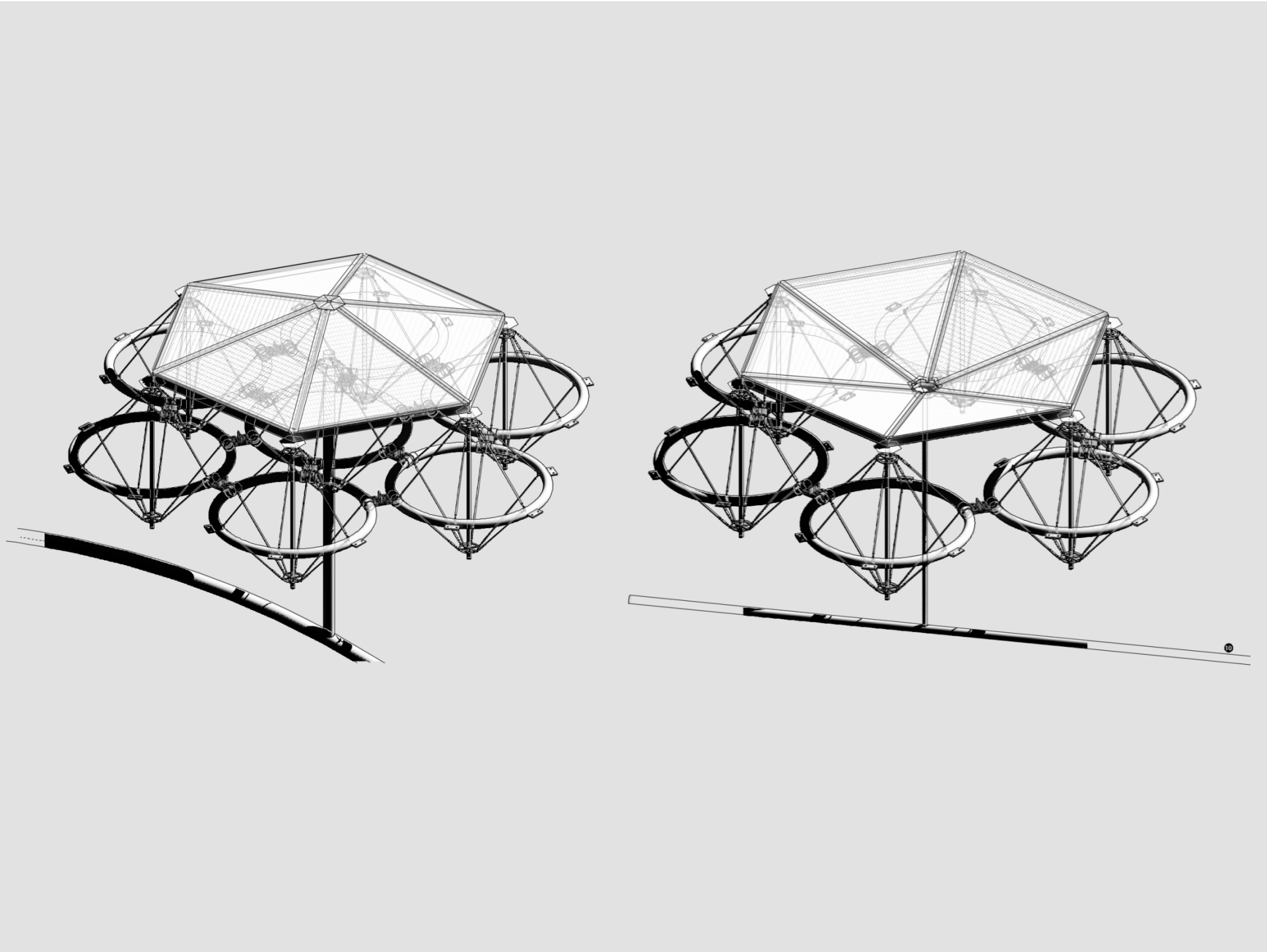


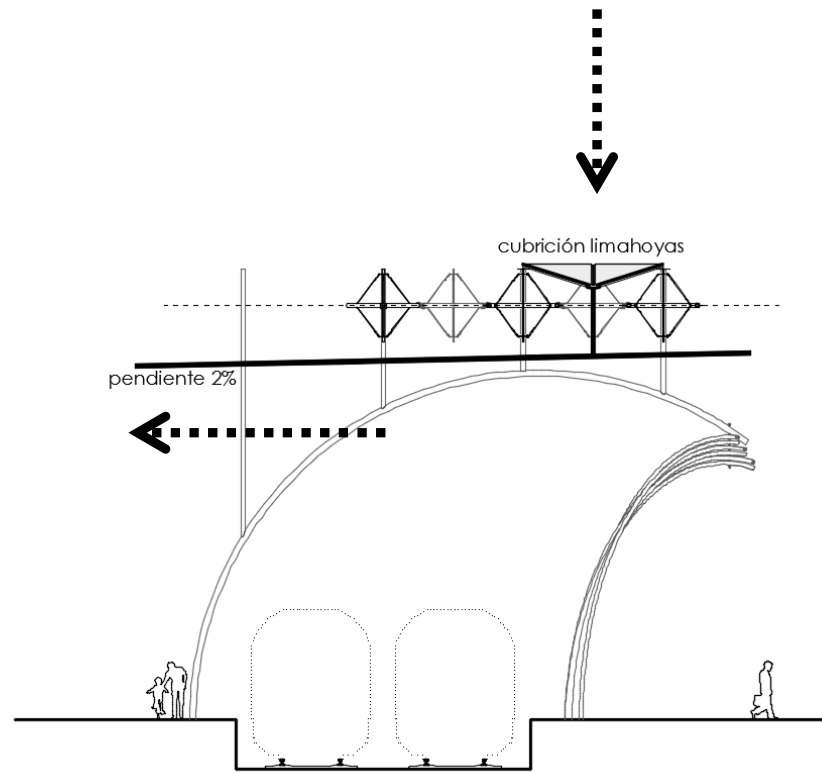
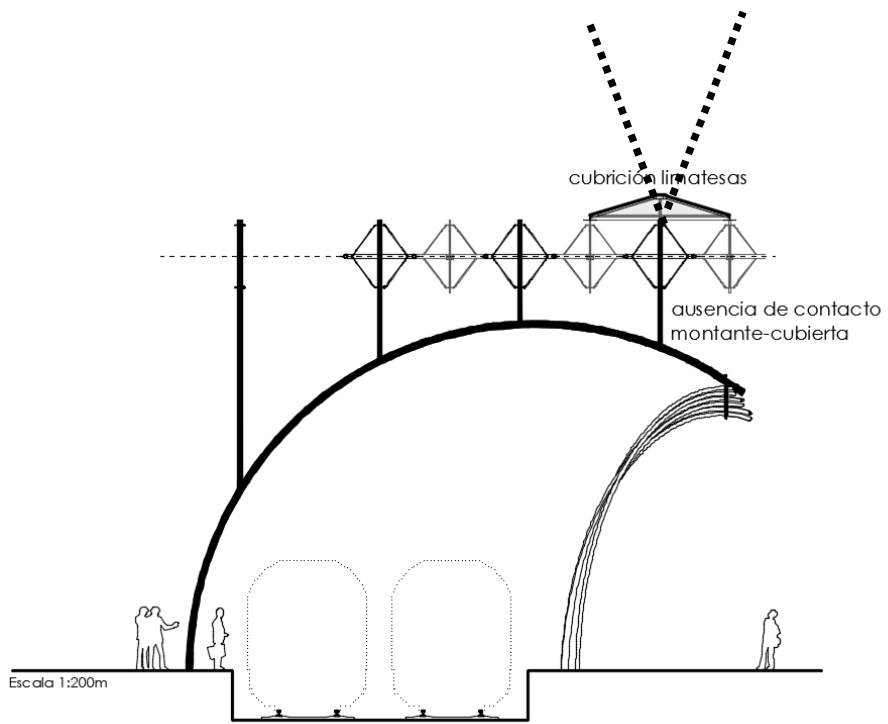
agrupación de
paraguas tipo S

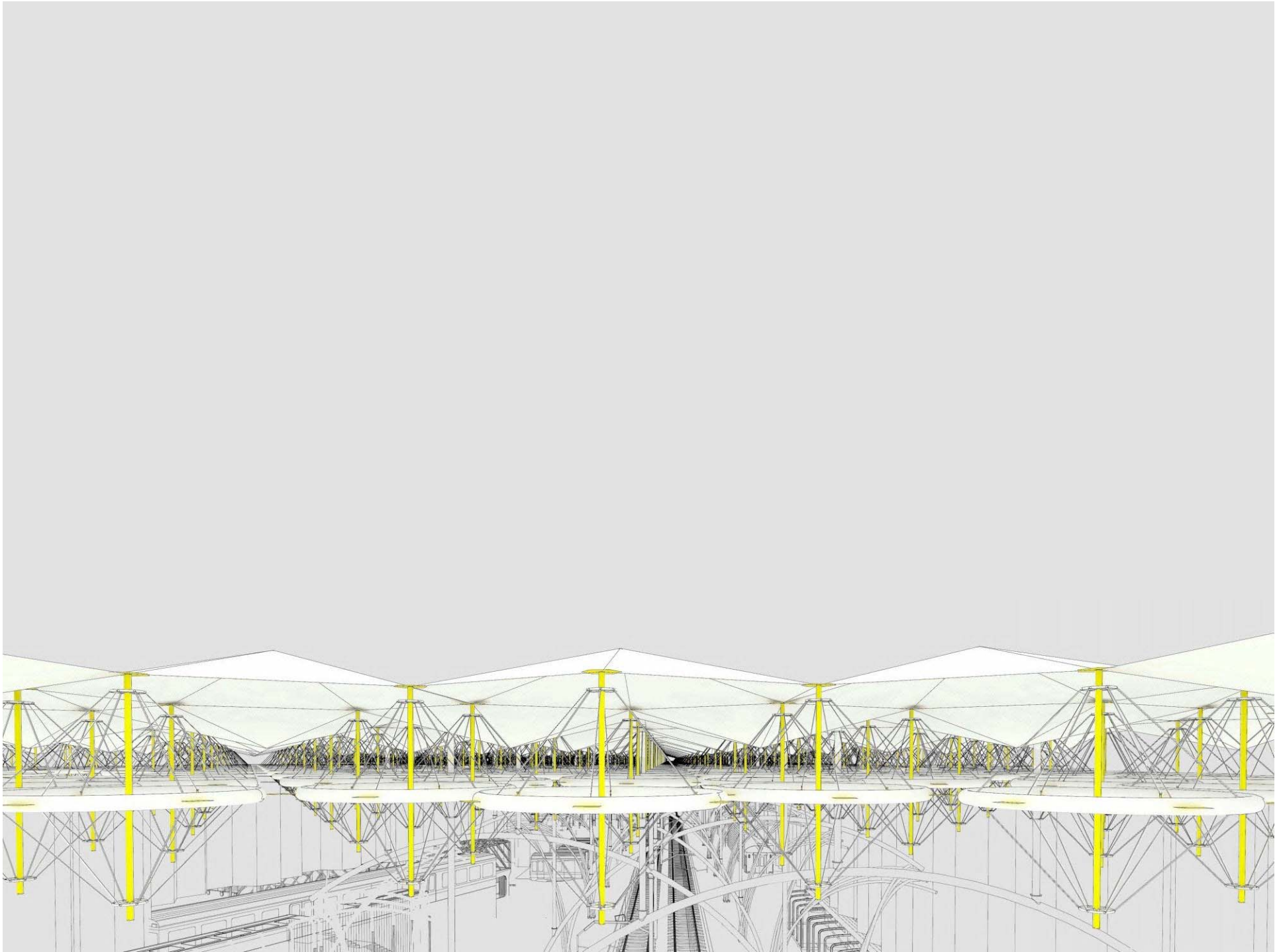


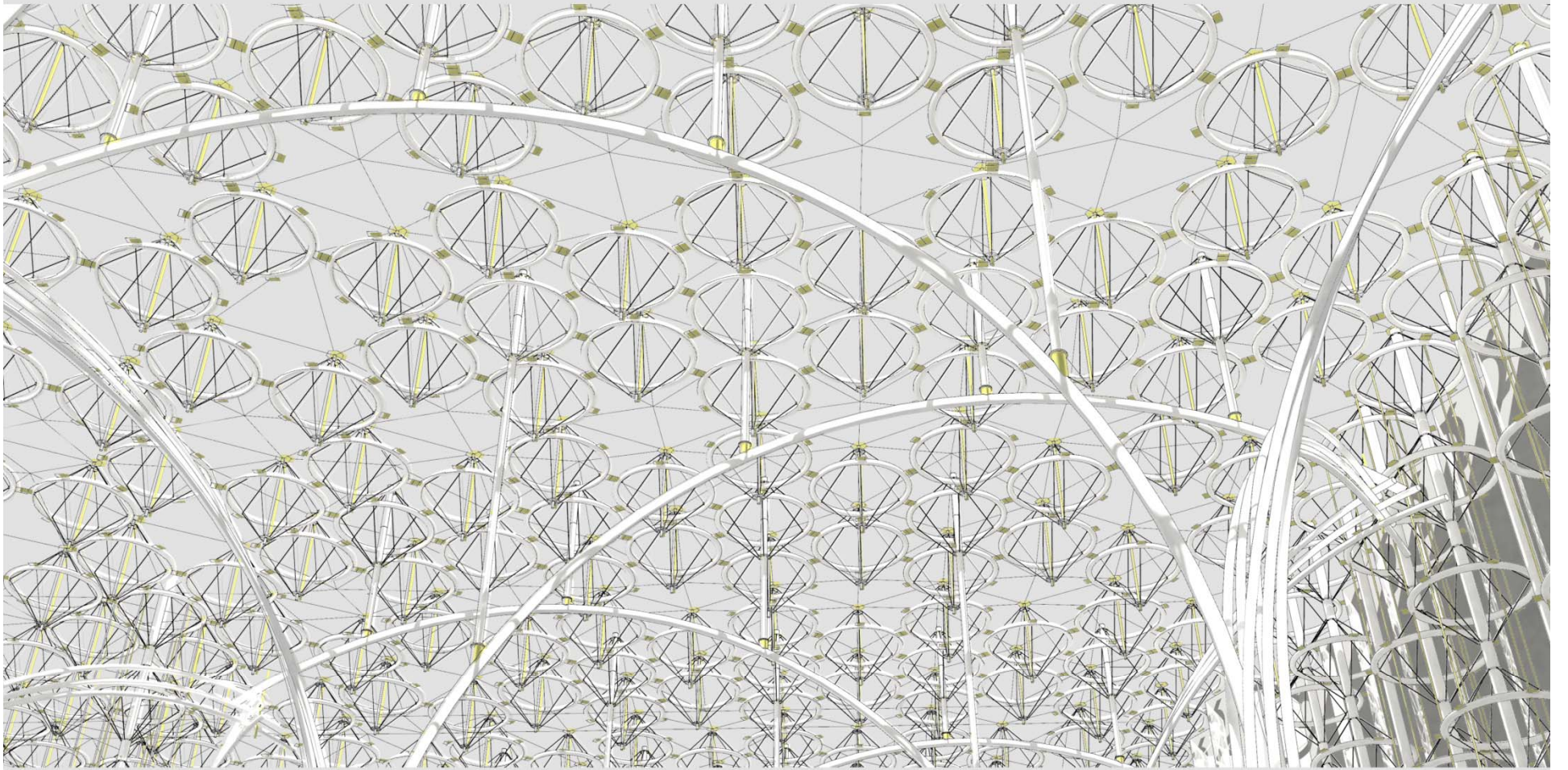
agrupación de
paraguas tipo S
alrededor de tipo M









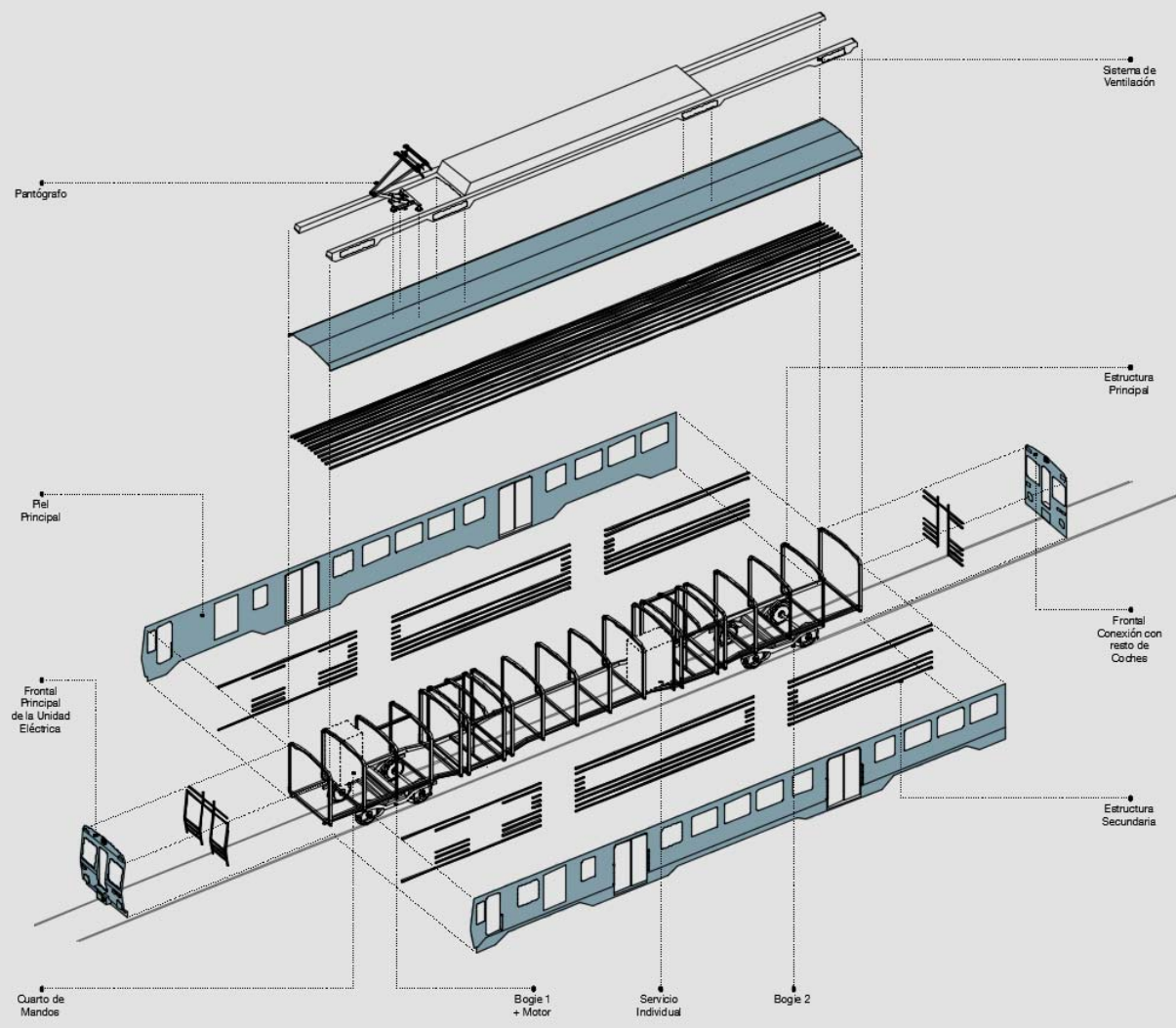




买隐形眼镜送镜盒
全场品牌太阳镜 6
品牌镜片全场 5 折



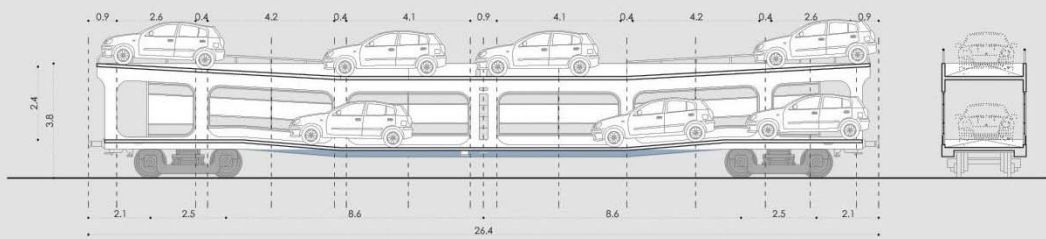
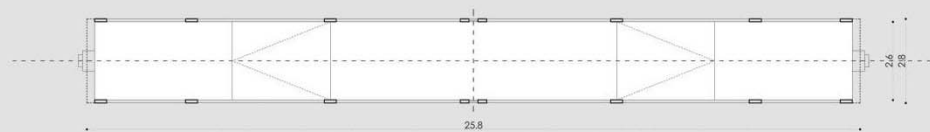
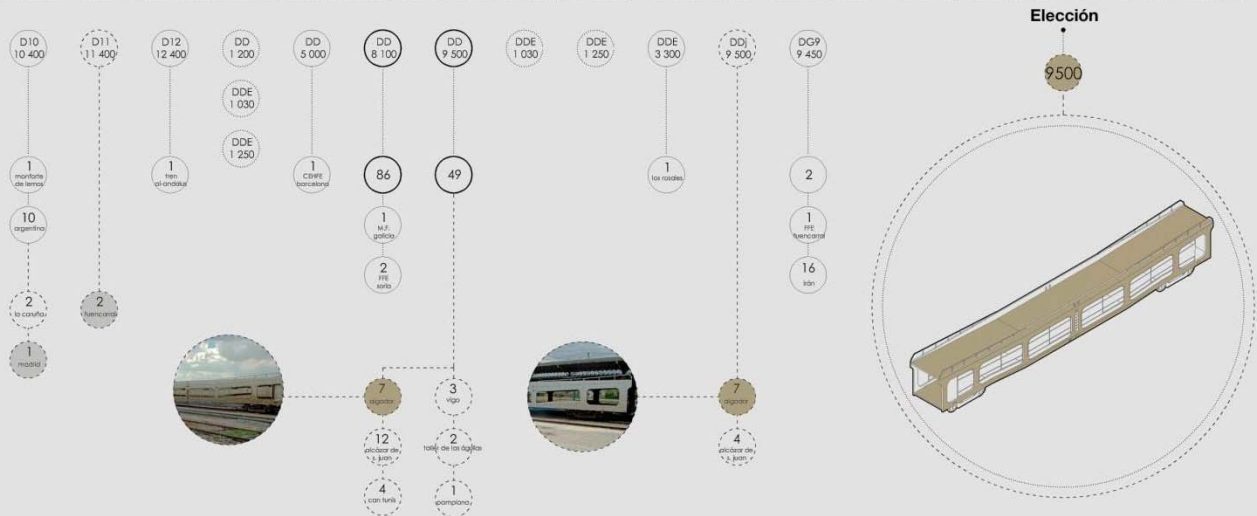




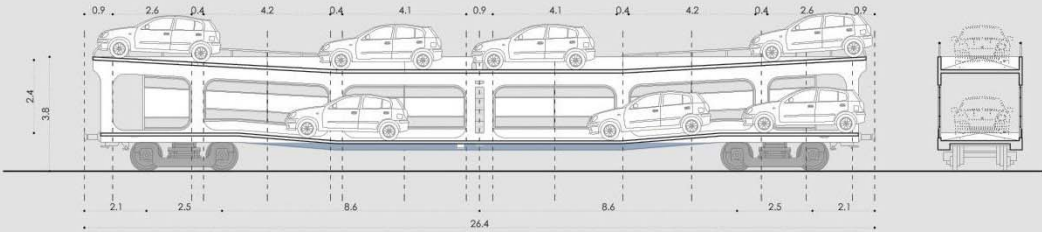
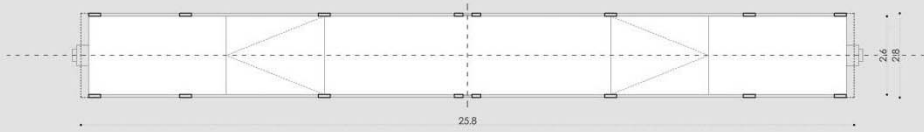
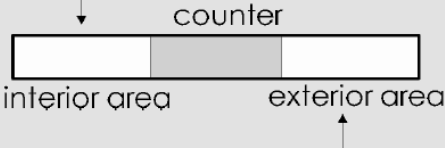
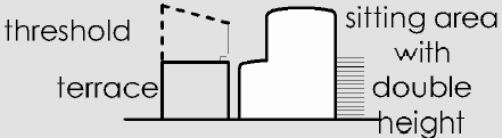
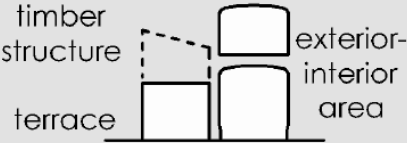
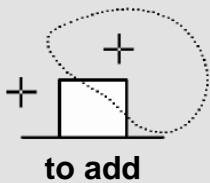




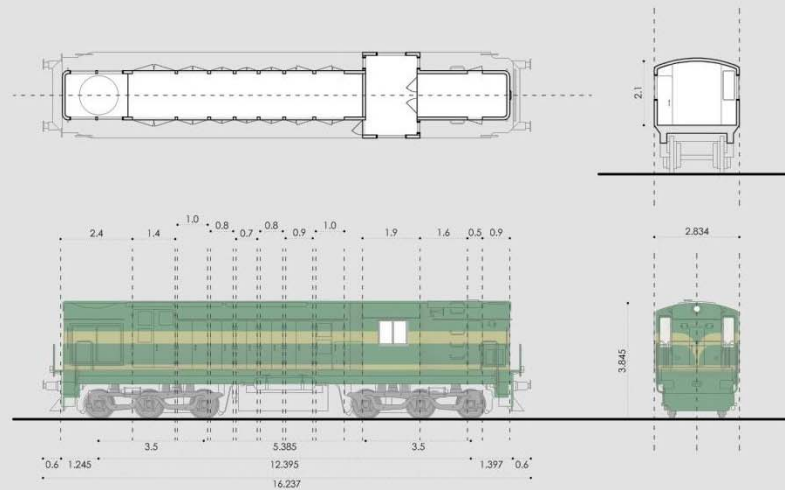
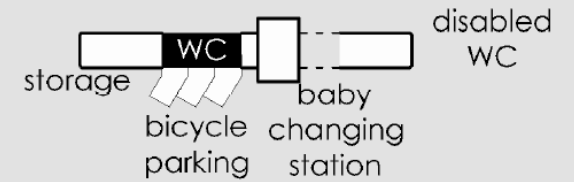
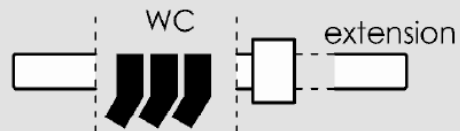
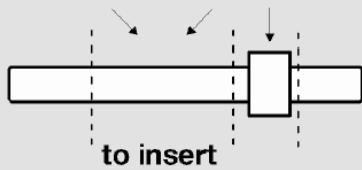
Cartransporters -> Terrace Inside-Outside

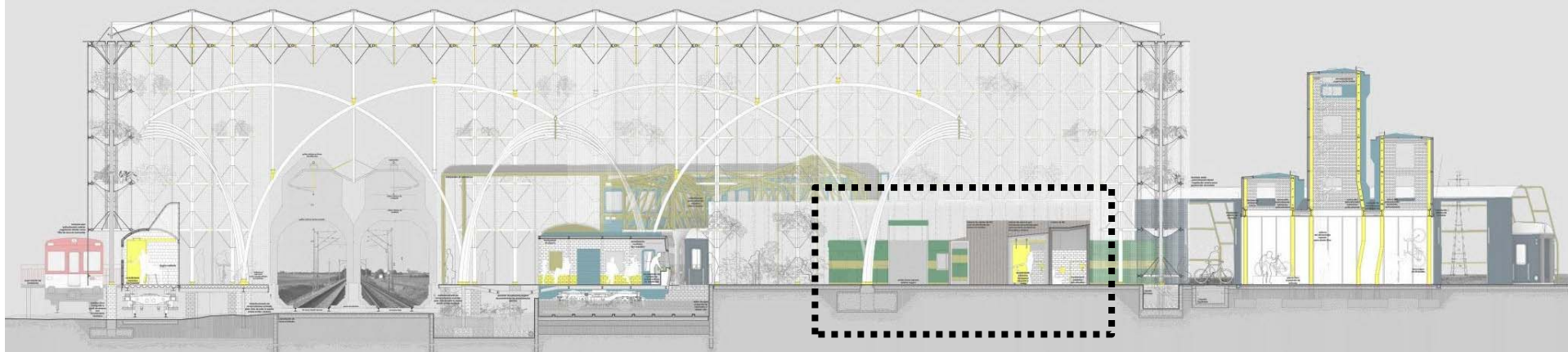
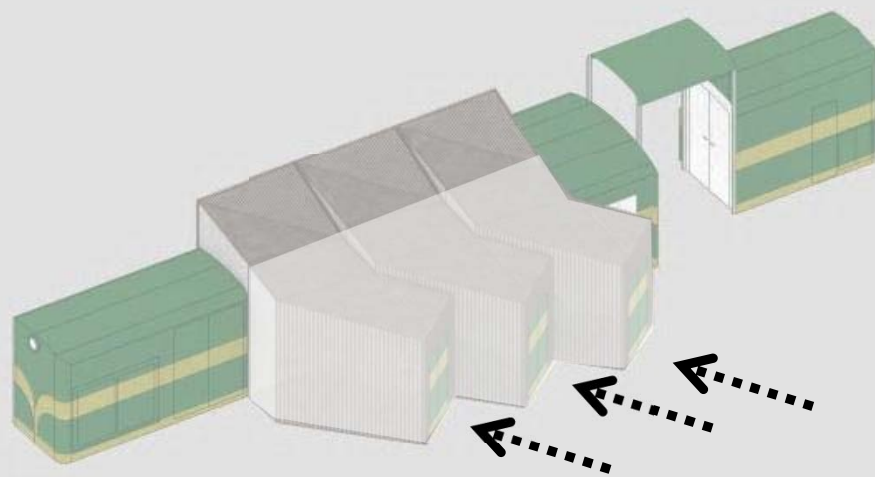


Cartransporters -> Terrace Inside-Outside

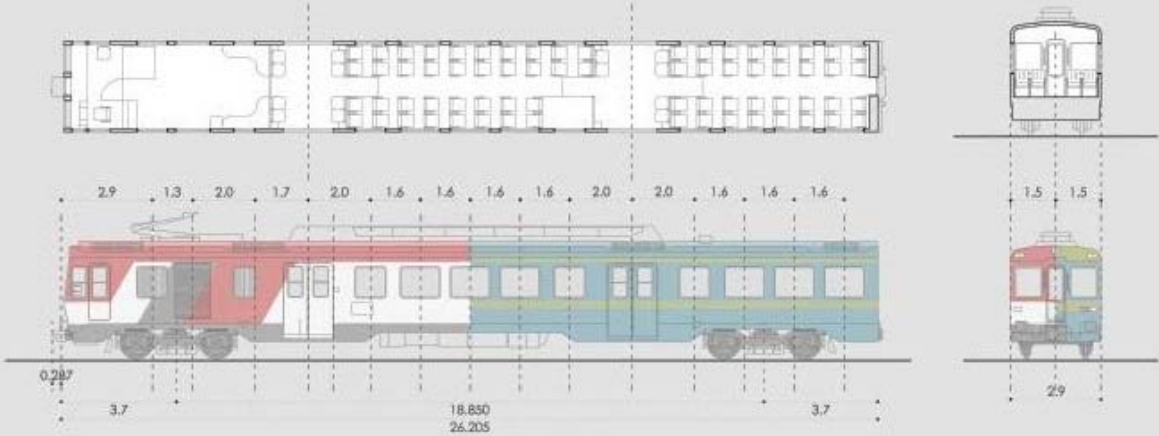
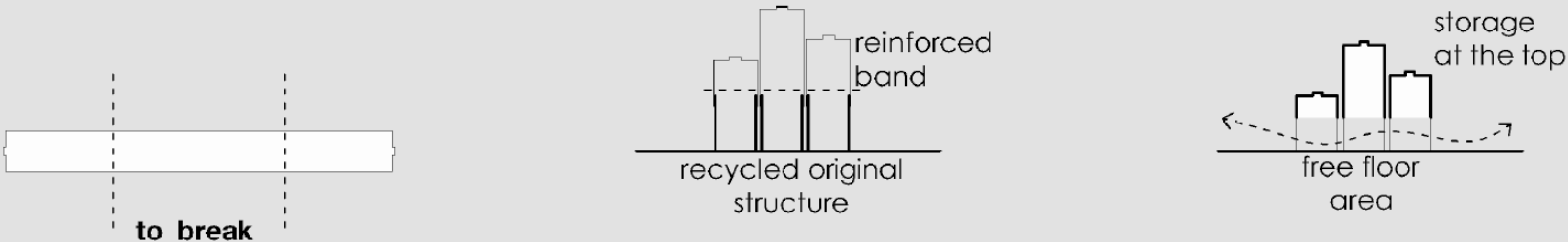


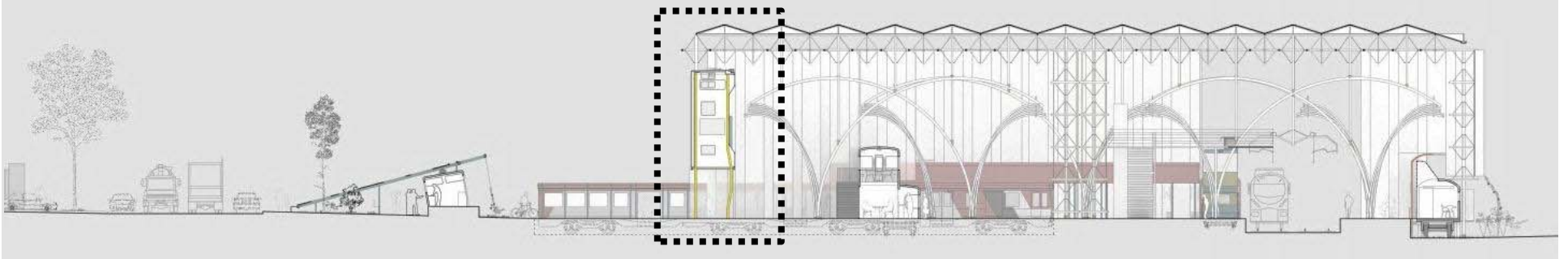
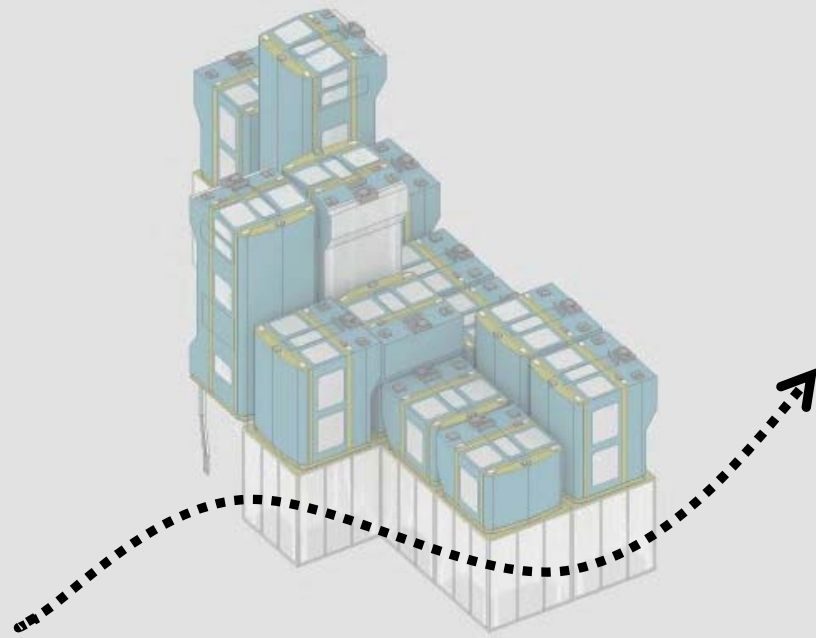
Diesel Engine 313 -> Toilets + Personal Bicycle Parking

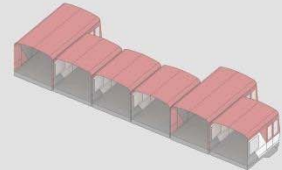
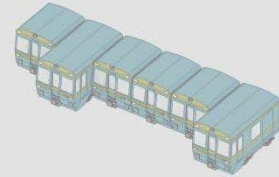
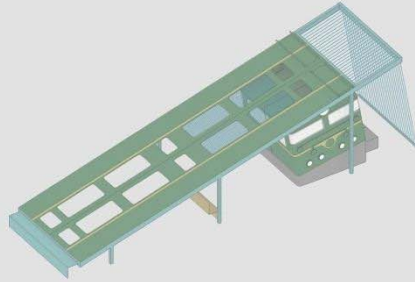
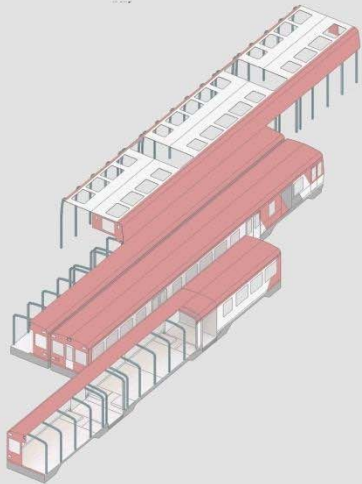
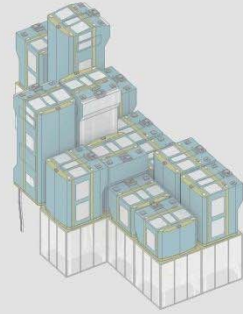
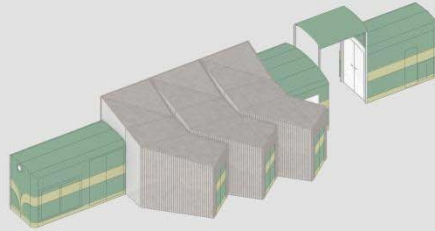
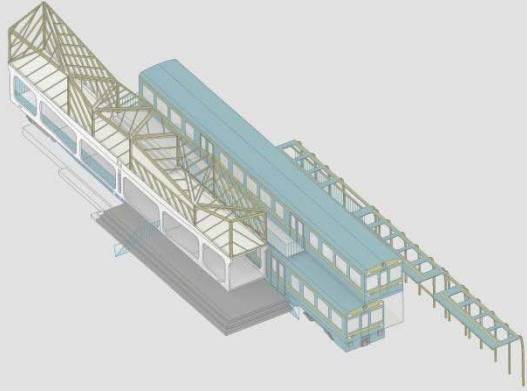


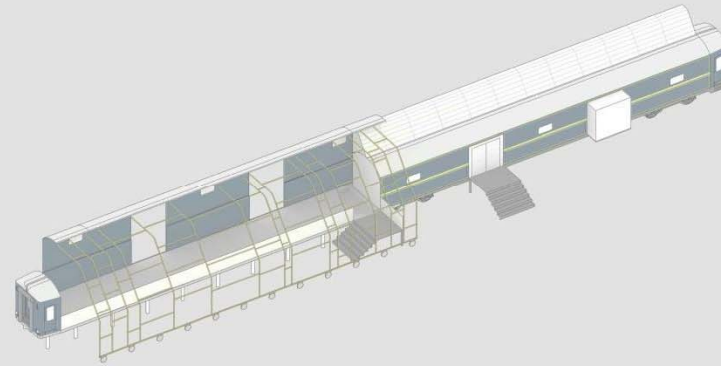
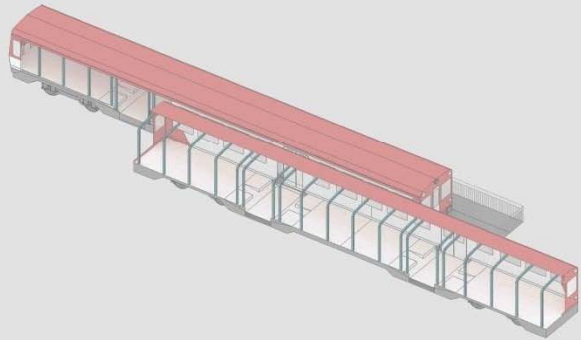
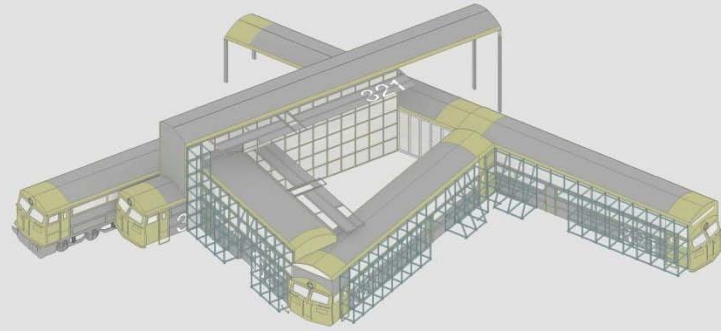
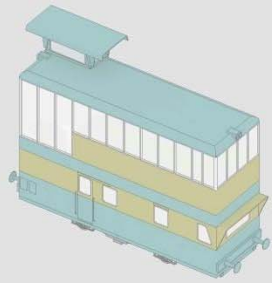


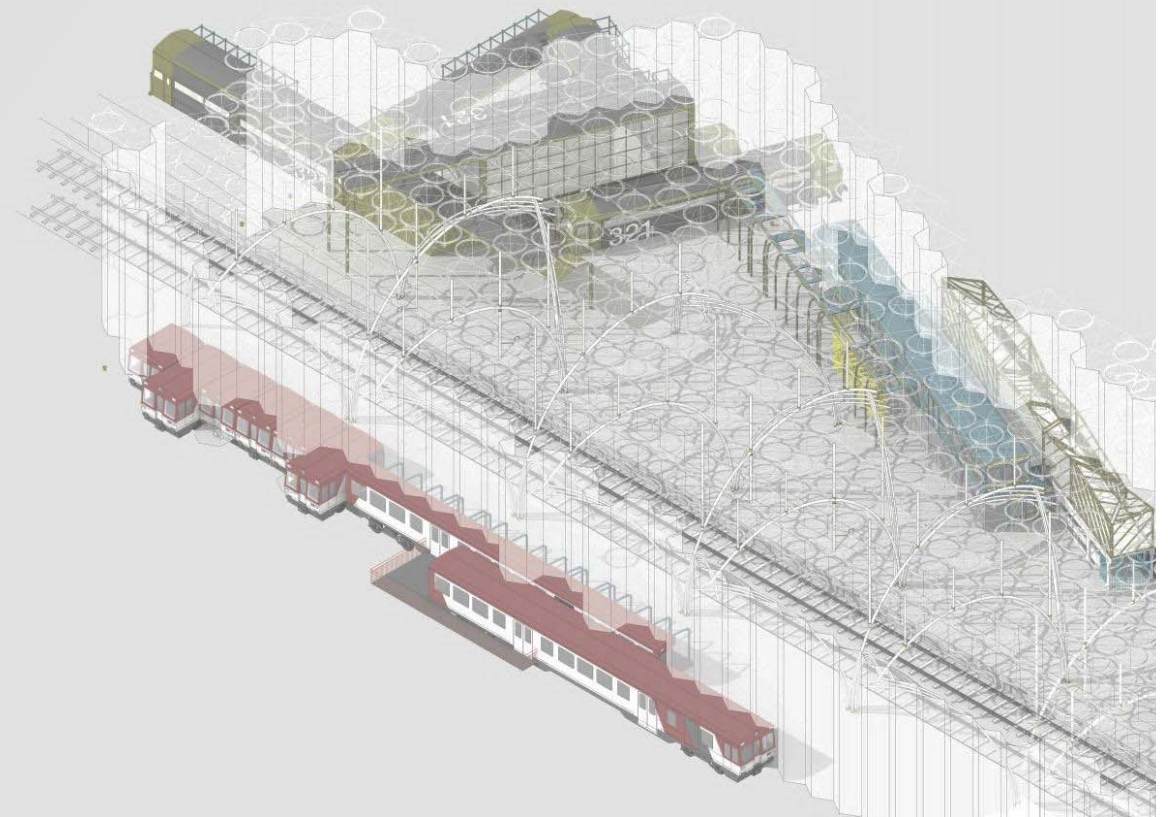
Electric Multiple Unit 440 -> Retail

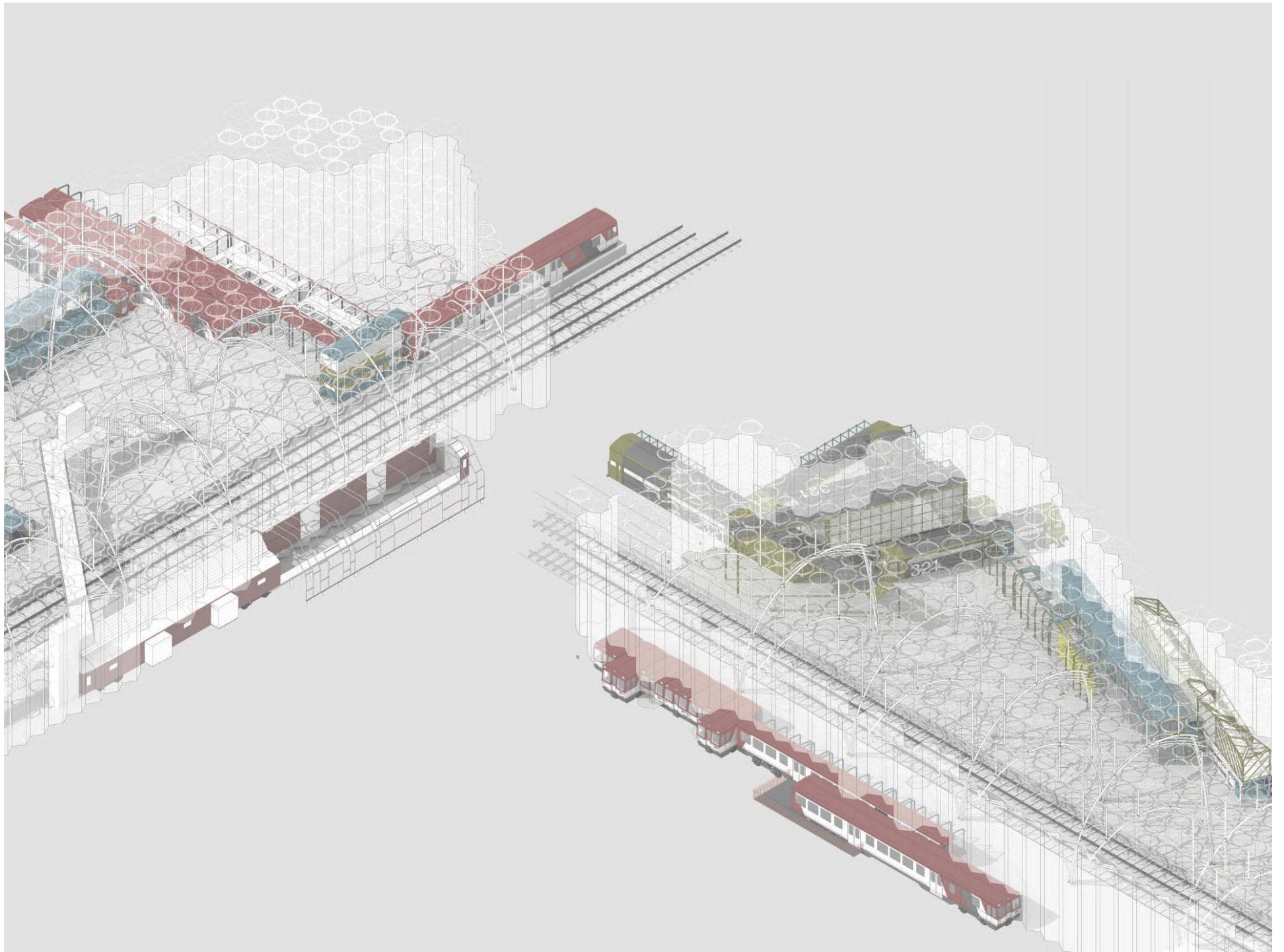


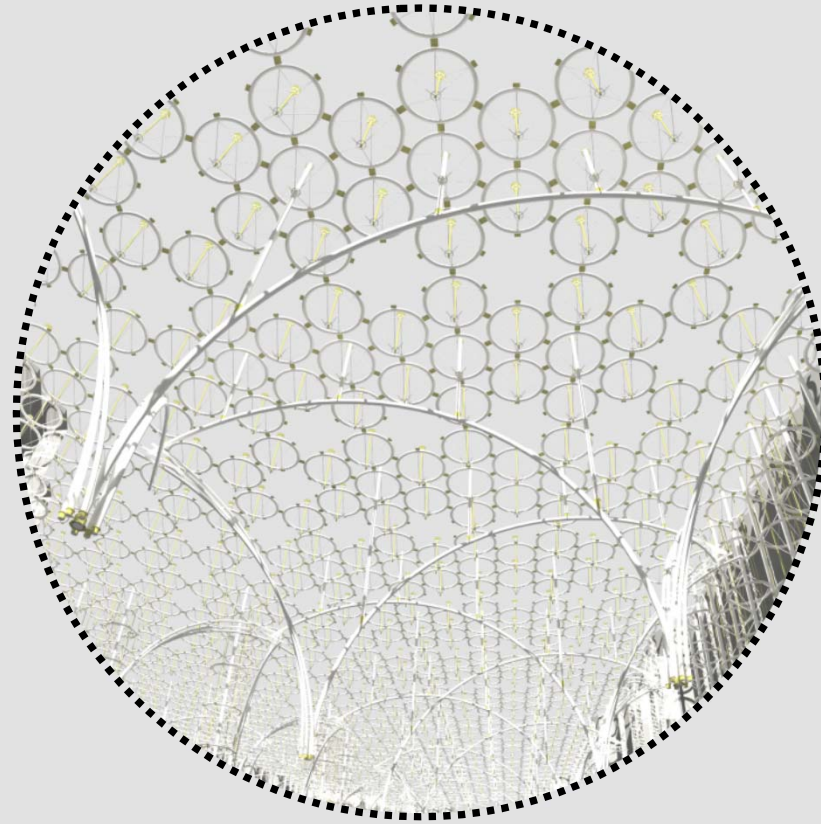


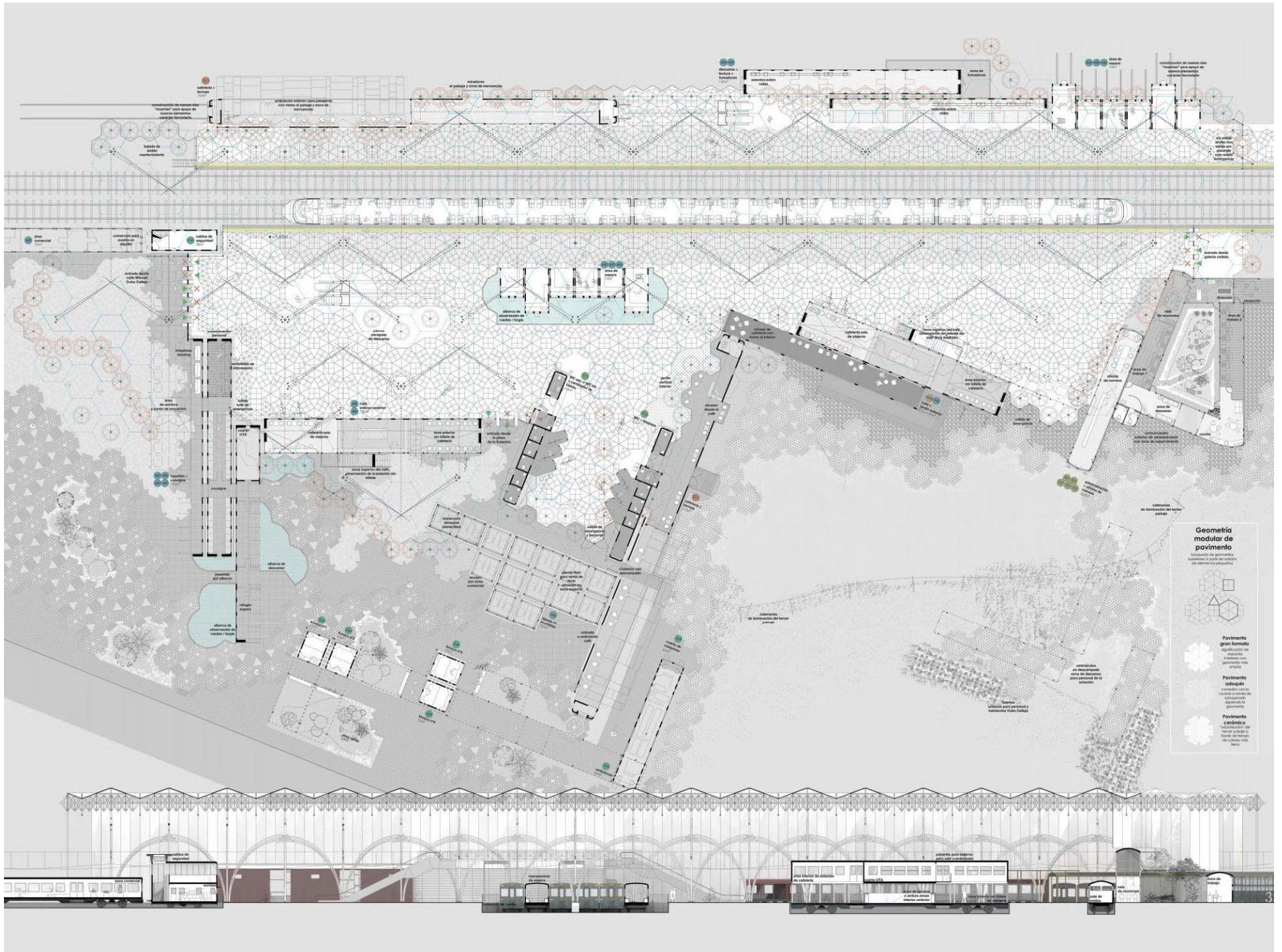








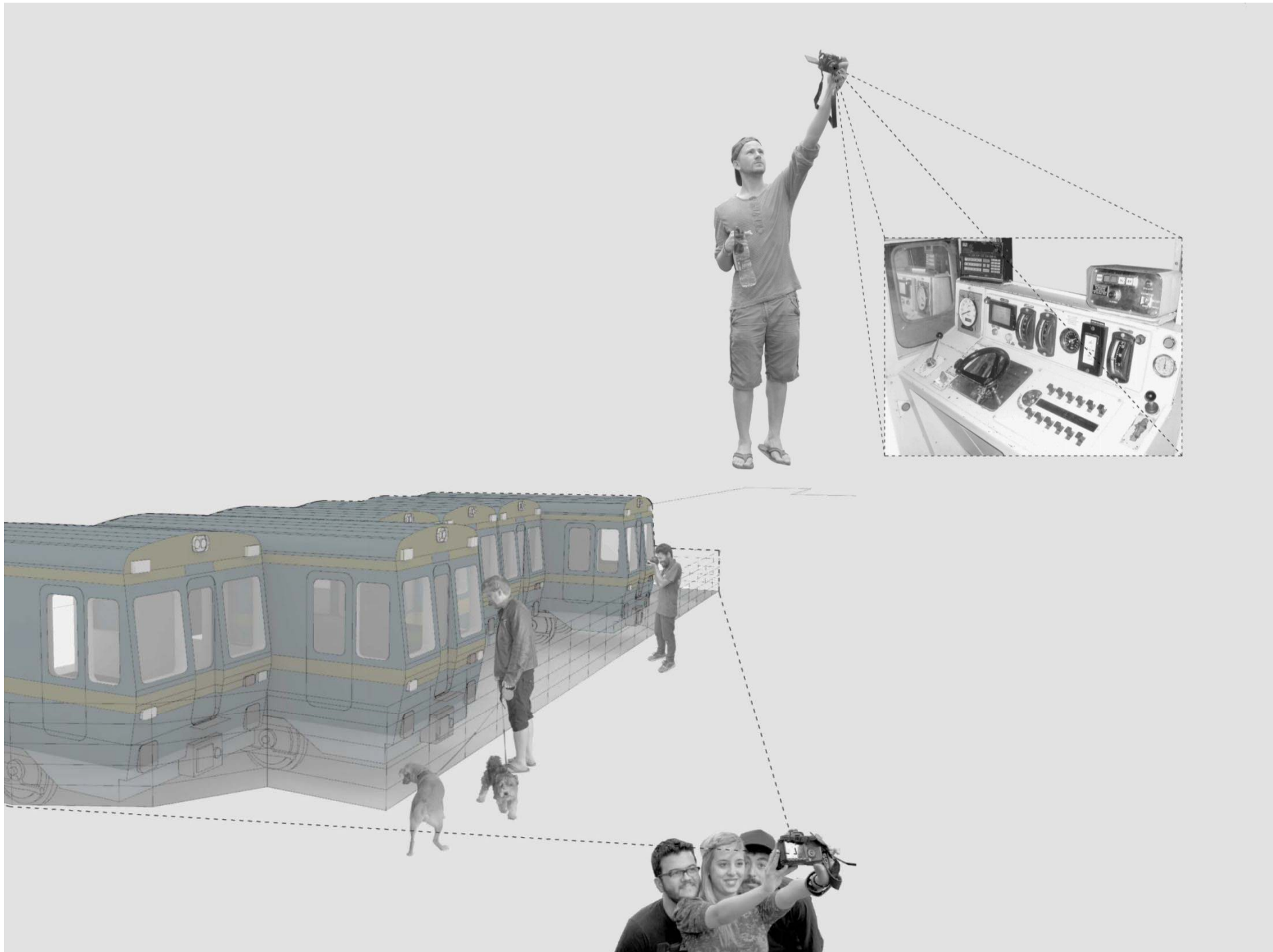


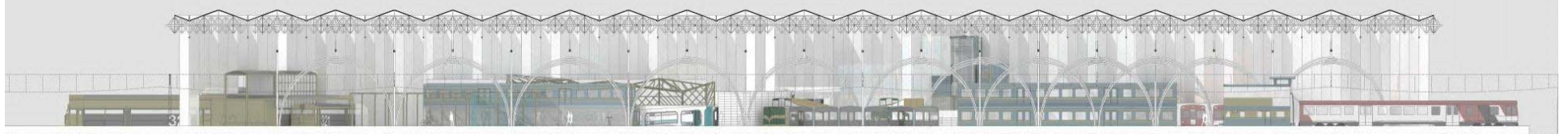


Geometría modular de pavimento

Diagram illustrating the modular pavement geometry, showing various paving patterns and their corresponding names:

- Pavimento gran formato:** Diagram showing a large, irregular paving pattern.
- Pavimento adoquín:** Diagram showing a traditional brick paving pattern.
- Pavimento geométrico:** Diagram showing a geometric paving pattern.









THANK YOU
GRACIAS

UNDER THE HIGH PATRONAGE OF



ORGANISERS

