

# NEXTSTATION

MARRAKECH 2015

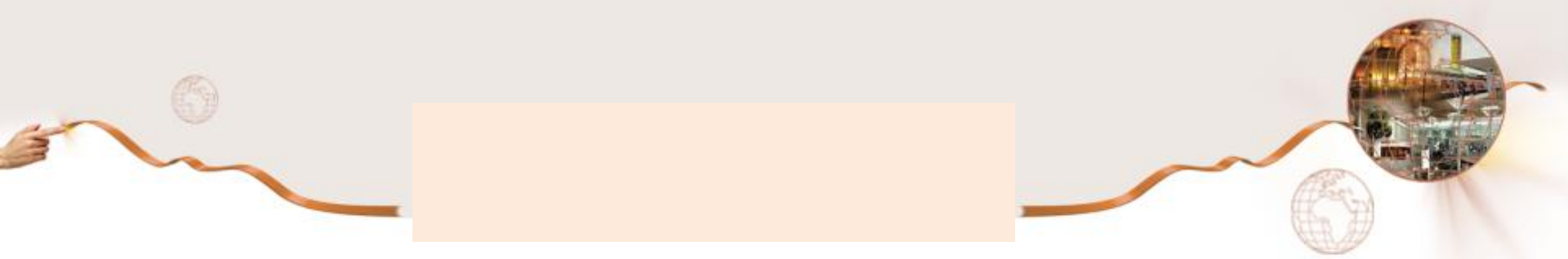


## 5<sup>TH</sup> INTERNATIONAL CONFERENCE ON RAILWAY STATIONS



Palmeraie Palace

Marrakech, 21-22 october 2015



# Station Renovation with the inauguration of the “Ueno-Tokyo Line”

- Takuji Ito
- Manager, East Japan Railway Company, Japan
- 2-B Design1



# Contents

- Part 1 Outline of the Ueno-Tokyo Line
- Part 2 Station Renovations
  - Tokyo Station
  - Shimbashi Station

# Outline of Ueno-Tokyo line

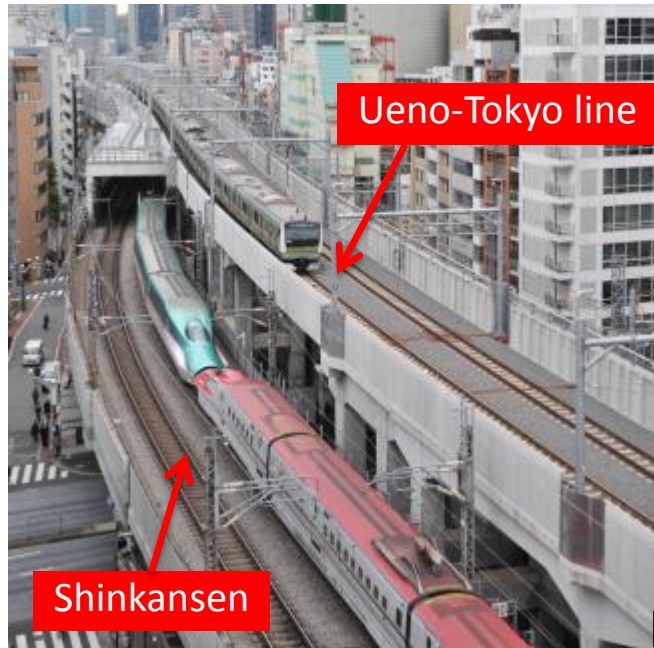
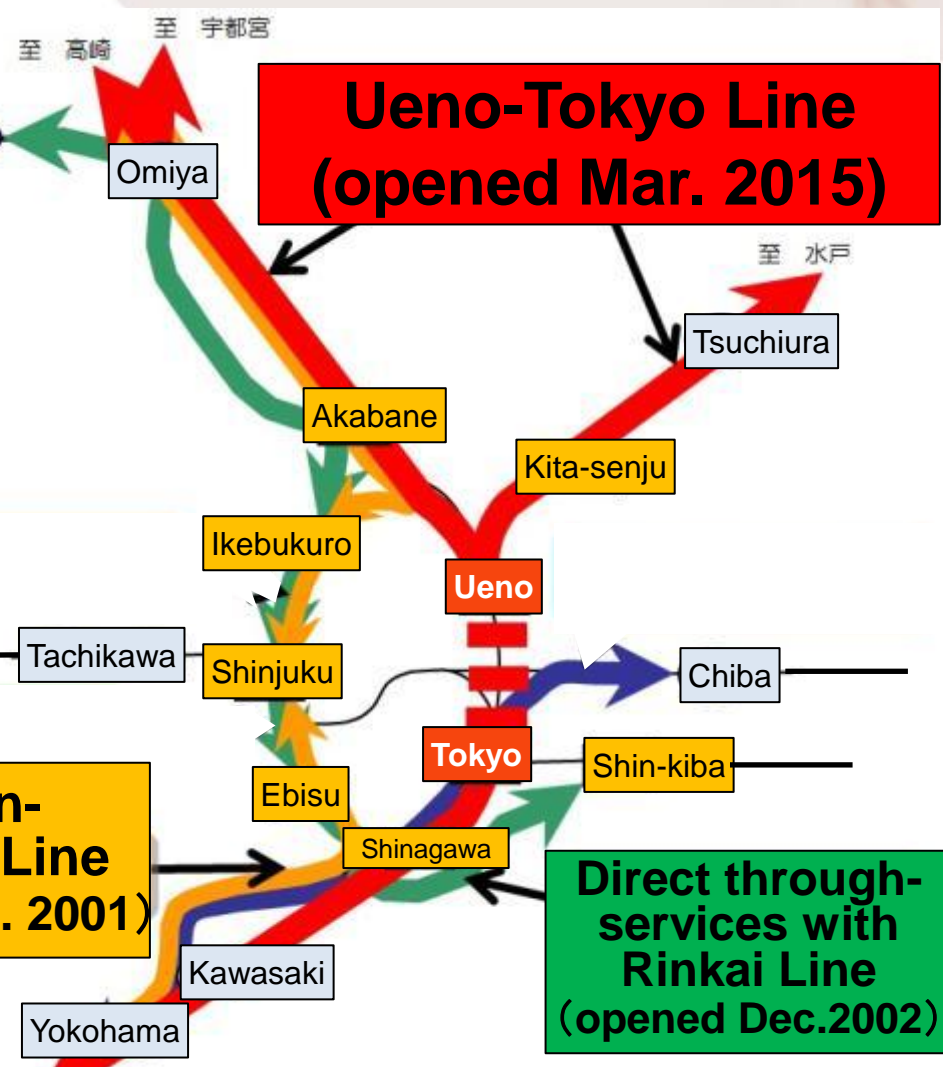


## 【Outline of Ueno-Tokyo Line】

- Line added between Ueno and Tokyo stations
- Construction start: May 2008
- Line opened: March 2015

## 【Purpose】

- Alleviation of congestion
- Reduction of travel time

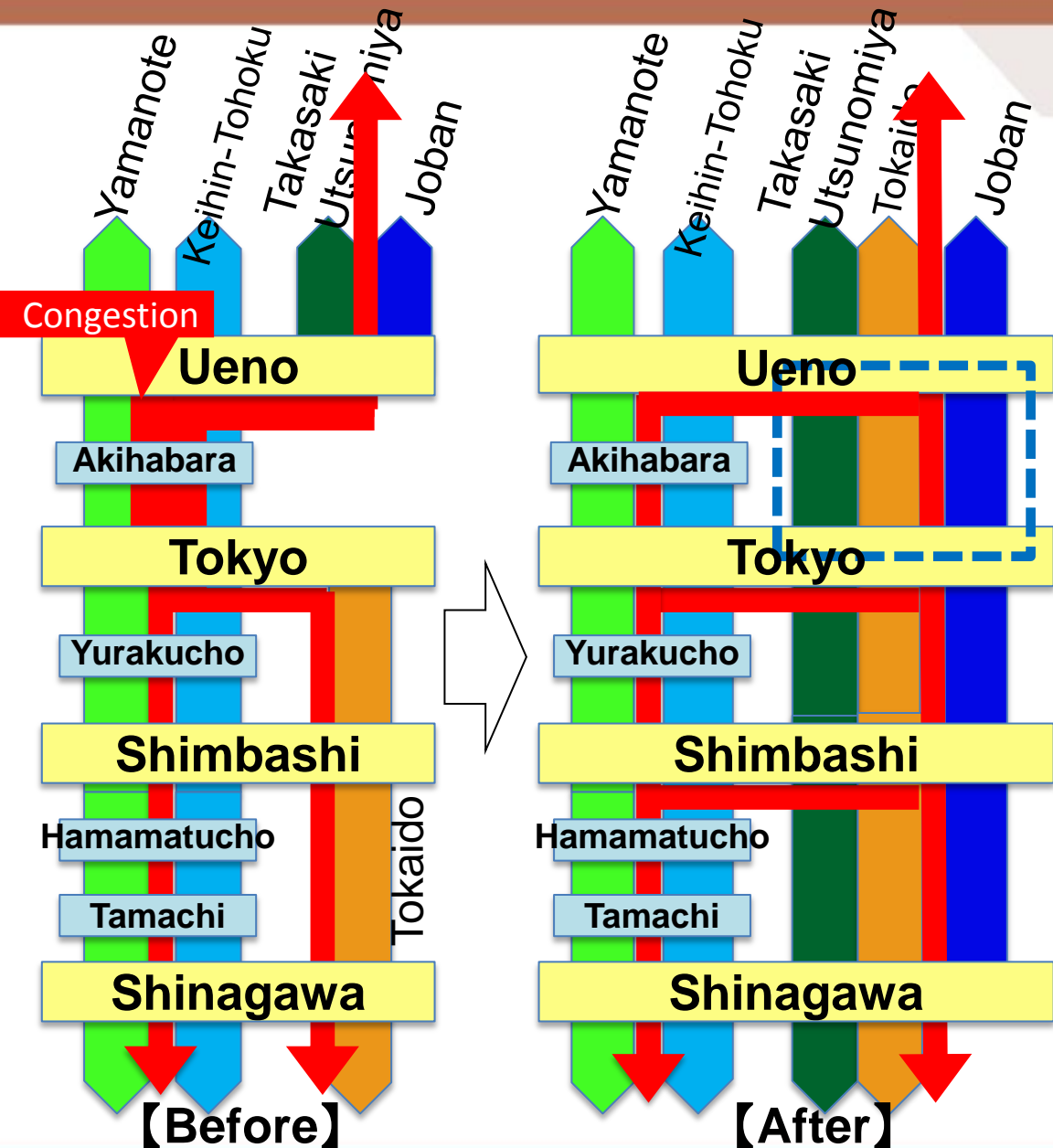


**Shonan-Shinjuku Line**  
(opened Dec. 2001)

**Direct through-services with Rinkai Line**  
(opened Dec.2002)

## Direct through services of Tokyo Metropolitan Area

# Outline of Ueno-Tokyo line



## 【Outline】

- Takasaki / Utsunomiya Lines  
⇒ Direct through-service of Tokaido Line
- Joban Line  
⇒ Direct though-service for Shinjima station

Change of passenger flow at stations  
Passengers transfer at different stations (Ueno ⇒ Tokyo, Shinjima)

## 【Station Renovation】

- Tokyo station
  - Enlargement of North Concourse
  - Development of new commercial area
- Shinjima station
  - Concourse improvement
  - Construction of large train cover



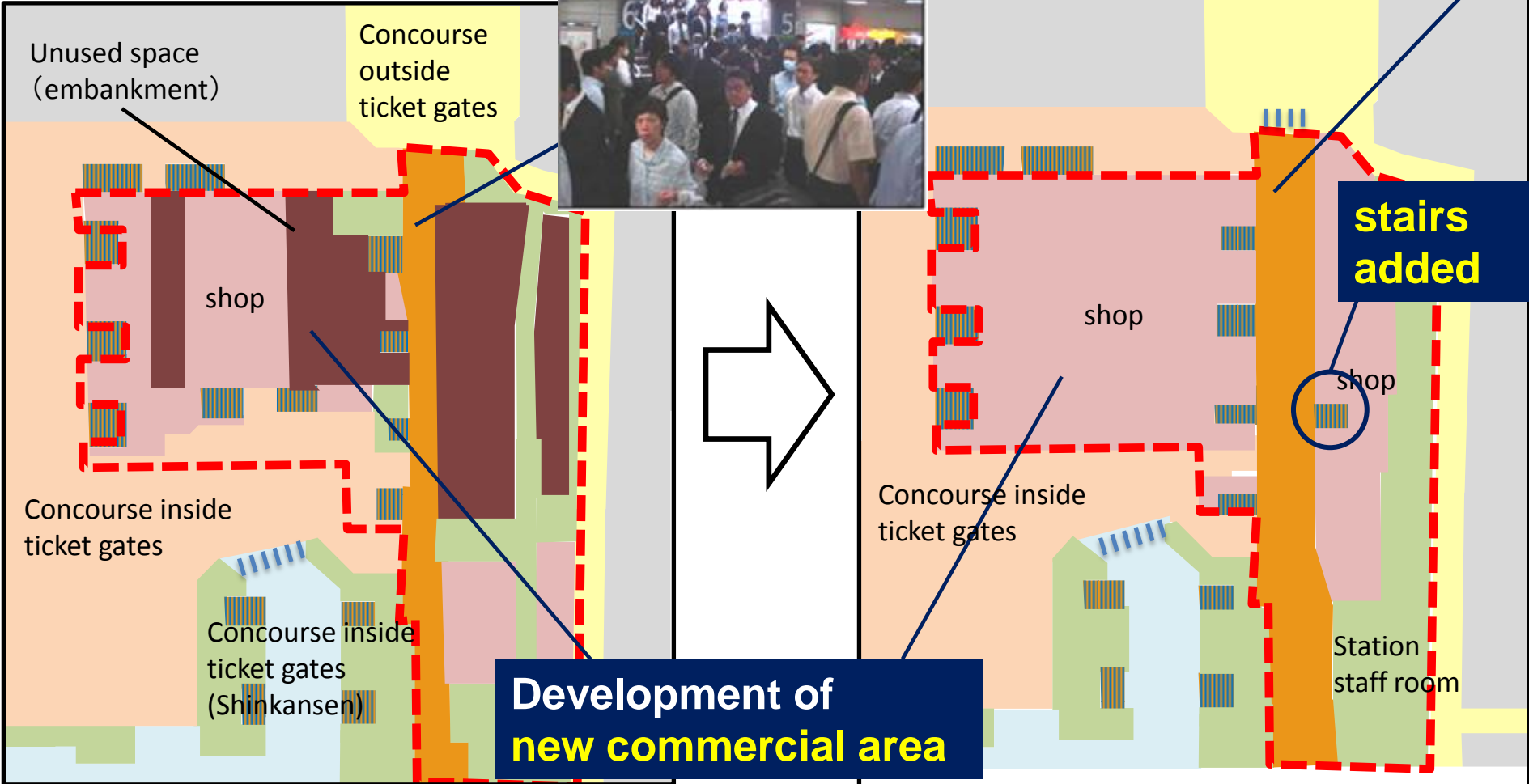


# Tokyo station



## Development of ground floor (first phase)

Widening of north concourse  
6.8 m  $\Rightarrow$  12m



before

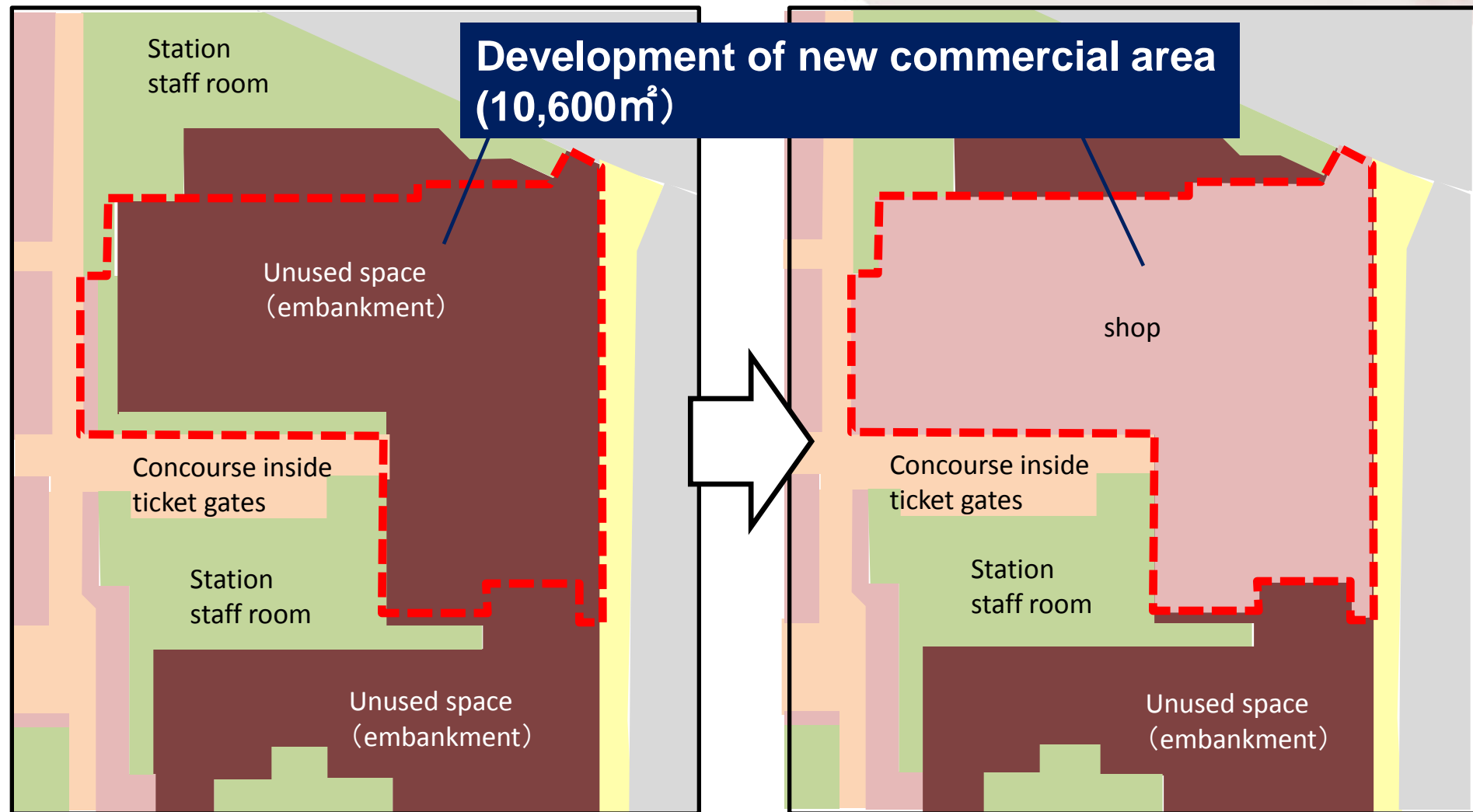
after

Development of  
new commercial area

# Tokyo station



## Development of underground B1 floor (second phase)





# Tokyo station



Image after completion(North Concourse)



Construction



Construction



Image after completion (underground)

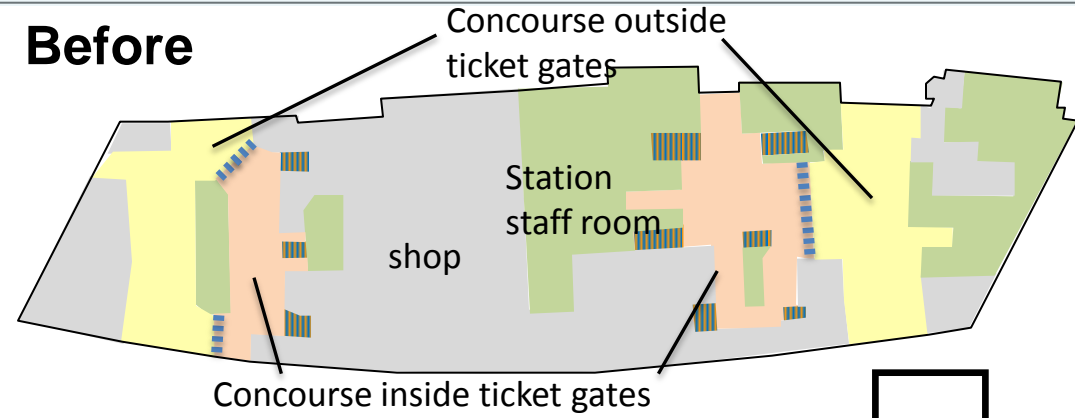
# Shimbashi station



## Outline of Shimbashi station

- Average daily passengers: 250,000/day
- Opened: 1872
- Lines: Conventional lines / 4 Platform 8 Lines

### Before



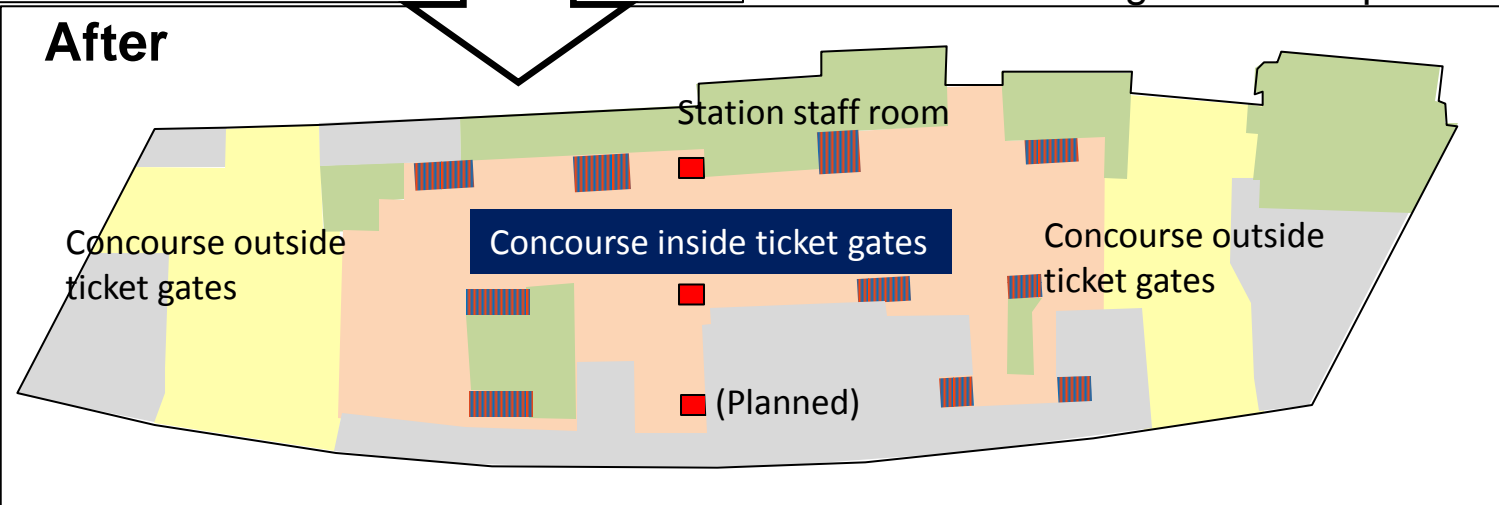
## Outline of Improvement

- Integrated north and south concourses into one single concourse
- Enlarged platforms for Tokaido Line
- Installed stairs and elevators to improve accessibility

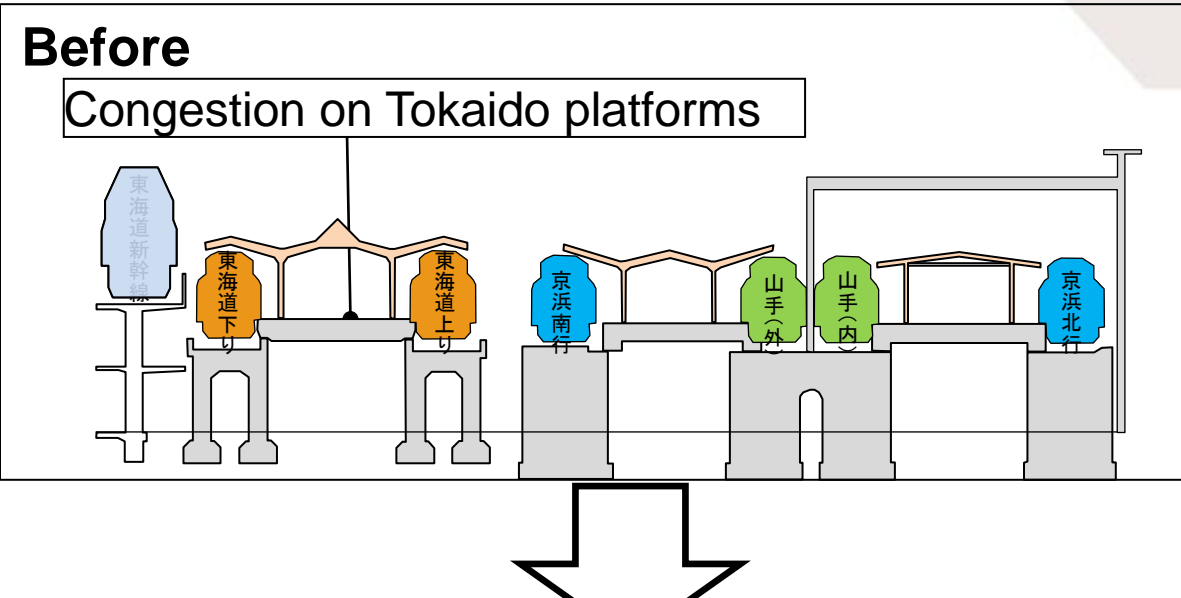


Current photo

### After



# Shimbashi station



### Outline of Improvement

- Enlarged platform for Tokaido Line
- Construction of big train shed

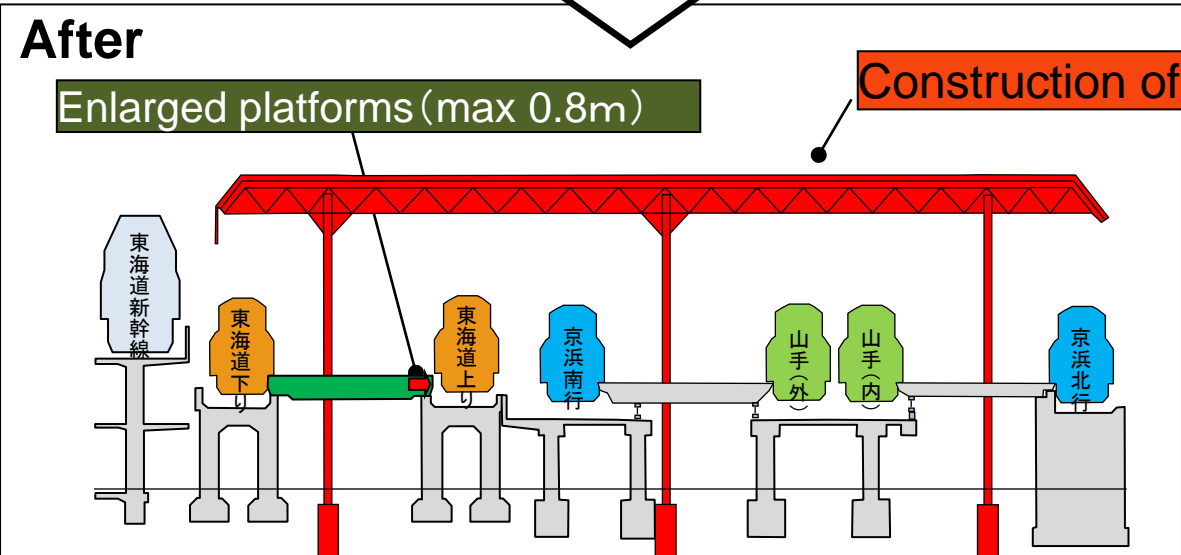
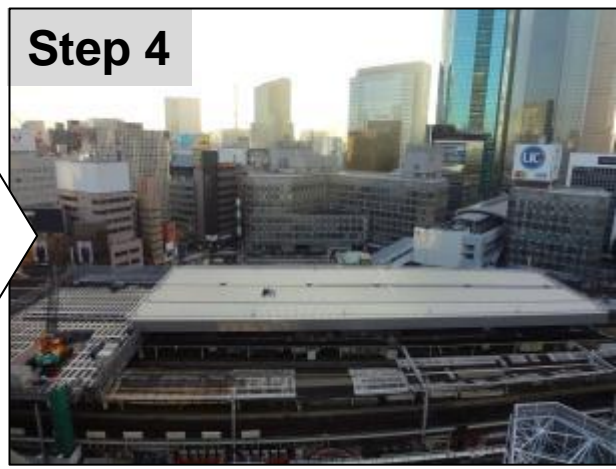
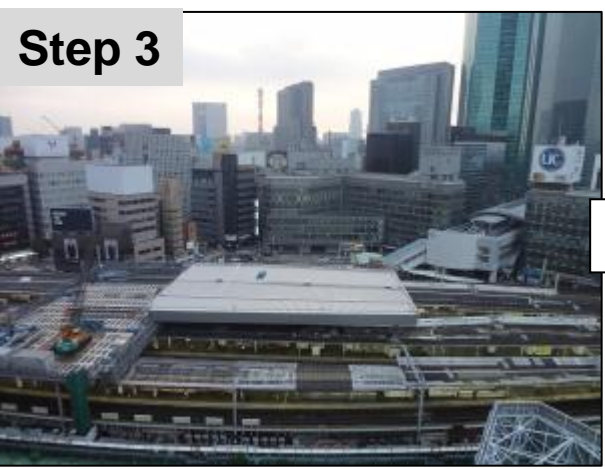
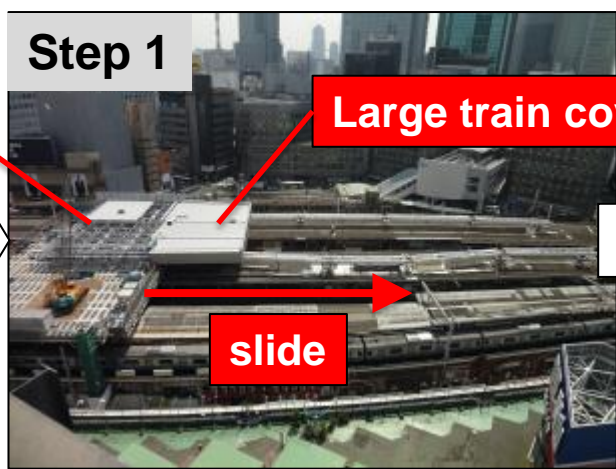


Image after completion



# Shimbashi station

## Slide construction of large train cover



# THANK YOU

# MERCI

- ITO TAKUJI/East Japan Railway company
  - takuji-ito@jreast.co.jp
  - <http://www.jreast.co.jp/>

