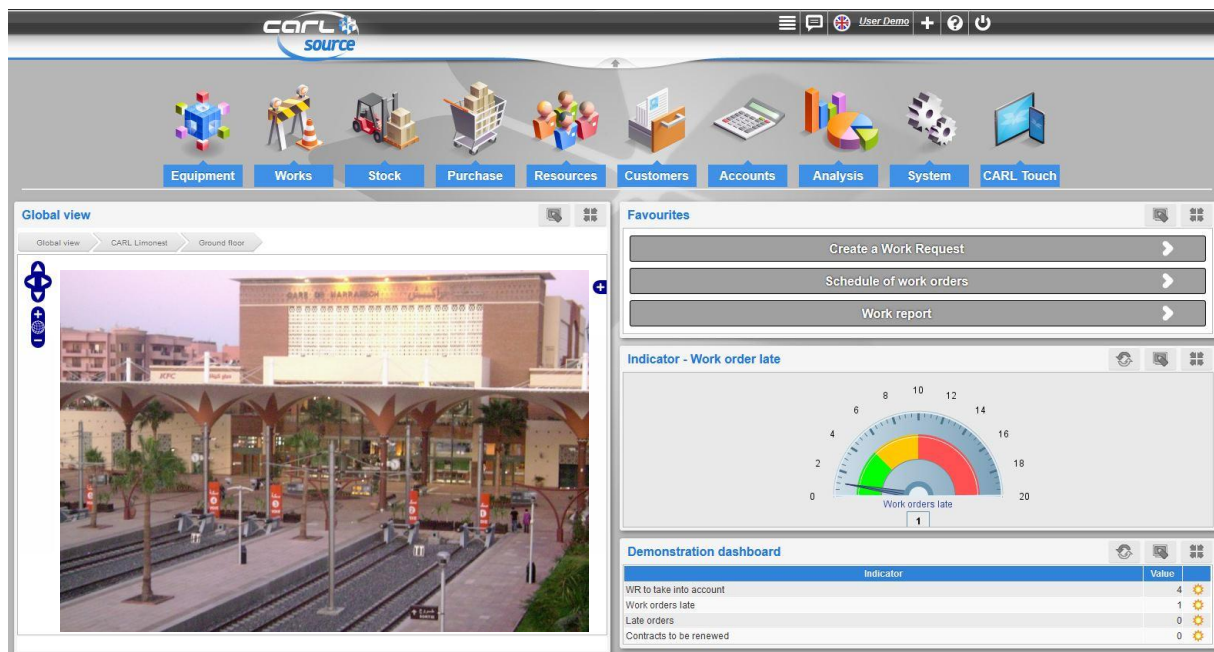


A Computerised Maintenance Management System (CMMS) at the heart of train stations



Monitoring and maintaining equipment in train stations is essential for the smooth running of all your facilities.

High levels of user satisfaction and safety are major issues for station operators, and the CMMS actively contributes towards these.

A CMMS is above all a tool designed for those in the maintenance/technical department.

It offers the following features:

- Ensure better availability of equipment
- Control maintenance costs of the facilities
- Extend the life of equipment
- Schedule the replacement of equipment
- Control the management of available resources
- Improve monitoring of subcontractors
- Optimise and rationalise stocks of spare parts
- Schedule work orders
- Describe and document technical operations
- Measure performance

A CMMS is an asset that reduces your maintenance costs and increases the availability factor of your services!



HP CDG IT SERVICES
Représentant CARL Software au Maroc

Much equipment is 'sensitive' and maintenance must be quick and efficient!

Maintenance staff schedules need to be organised

- Internal teams
- Subcontractors

Equipment availability must be planned

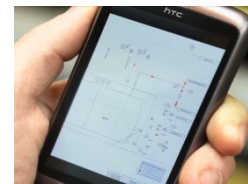
- Fixed equipment
- Portable equipment
- Real estate assets

Work orders must be planned

- Corrective
- Preventive
- New work
- Regulatory inspections

Quick access to data is needed in the field

- On smartphones
- On tablets



Every station has much to gain!

Organisational benefits

- Less corrective maintenance
- More preventive maintenance
- Better distribution of in-house and subcontractor workload
- Better safety conditions
- Accurate information available in real time in graphic formats
- Structured fault analysis (FMECA)
- Better monitoring of subcontractors
- Better monitoring of actions to be carried out

Financial benefits

- Increased equipment life
- Reduced maintenance costs
- Energy savings
- Fewer spare parts stored
- Increased human resources productivity by optimising provisional schedules
- Optimisation of the ordering process
- Better monitoring of subcontracting costs

Technical benefits

- Reduction in downtime
- Better equipment availability
- Better equipment flexibility
- Staff better informed
- Immediate analysis available
- History for each item of equipment
- Discussions with production department and suppliers based on complete and reliable data
- Optimisation of the maintenance strategy

There is always a piece of equipment to be serviced less than 100 metres away, especially in a train station...



Frédéric Boutier
Deputy Sales Manager
CARL Software
Tel: +33 6 75 26 69 18
E-mail: fbou@carl.eu